

R32 LIGHT COMMERCIAL

Single Split
Inverter Series



MY Acson



A3CKY,A3CCY,A3CMY-2402



Inverter WiFi 

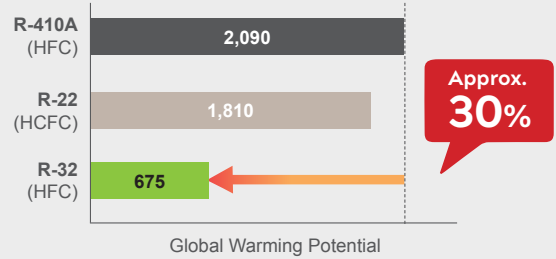
ACSON
International
Air Conditioners

R32 REFRIGERANT

Greenery Refrigerant



Acson MyEco offers eco-friendly products which lead to a more environmentally friendly and sustainable future. R32 refrigerant contributes to zero ozone depletion potential and the reduction of global warming potential up to 30% when compared with R410A and R22 refrigerant.

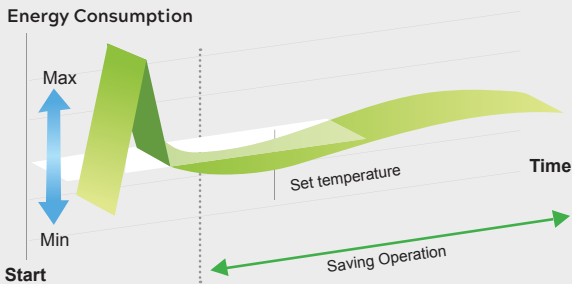


INVERTER TECHNOLOGY

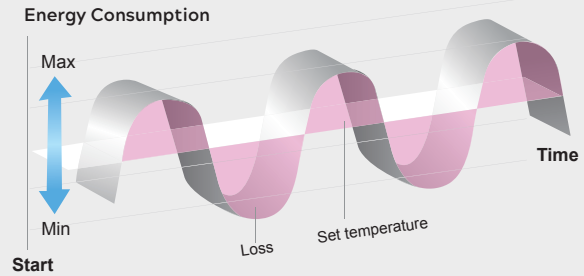
Inverter technology controls the compressor's speed accordingly to continuously regulate the room's temperature. The compressor is not running constantly at full power, as the system utilizes a controlled compressor that works at variable speed settings. This consequently leads to much more energy efficient and better cooling comfort.

ENERGY SAVING

When the indoor temperature reaches the set temperature, inverter technology will adjust to low-capacity operation to maintain the set temperature. This makes inverter technology more energy-saving than non-inverter technology, which must repeatedly start and stop its compressor's operation to maintain the set temperature, which can be costly endeavor.



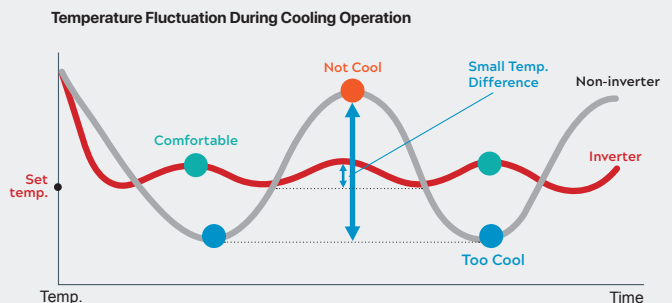
INVERTER: AC will cool with maximum capacity at start up then the compressor will adjust its speed accordingly to continuously regulate the room's temperature.



NON INVERTER: It maintains the temperature by repeatedly switching power ON and OFF. The repeated ON and OFF operations will result in more electric consumption due to bigger temperature fluctuations.

COOLING COMFORT

Inverter's compressor speed is controlled at a variable speed which provides a more precise, on-demand approach to temperature control, whereas the non-inverter system uses a fixed-speed compressor, which cycles the unit on and off, resulting in unpleasant temperature swings.



FILTRONZ+ Filter

Anti Virus Technology



Acson R32 Ceiling Cassette comes with Filtronz+ filter, Anti Virus Technology as standard which proven effectively decompose virus and reduce bacteria & fungus on the filter surface.

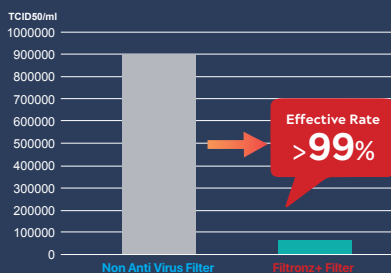
- 99% effectiveness in decomposing virus and reducing bacteria & fungus.
- Environmentally friendly and recyclable.
- Non-toxic & non-hazardous, skin-friendly.
- Suitable for residential and light commercial application.

**Recommended to clean the filter once every two weeks to deliver consistent performance around a year.*



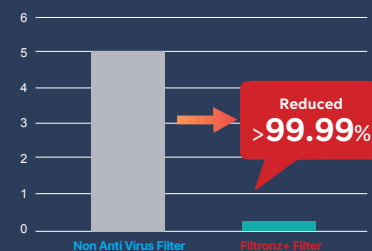
Decomposition of Viruses

The effectiveness rate of virus decomposition is increased by 99% in 2 hours



Reduction of Bacteria

The effectiveness rate of bacteria reduction is more than 99.99% in 24 hours



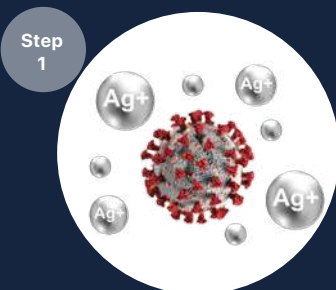
Reduction of Fungus

Generation of fungus achieved Grade 0 in 24 hours (No fungus visible under the microscope)

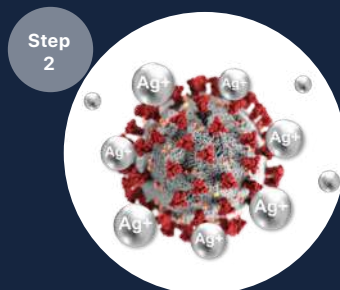


**Image is for illustration purposes*

How Filtronz+ Filter works?



Silver ions (Ag+) on the filter absorb virus to the filter surface



Combination of organic and inorganic components simultaneously react to change the protein that exists on the virus surface



Enzyme protein inactivated, thus the viruses are decomposed and prevented from spread

Test Measuring Method:

Textiles- Determination of antiviral activity of textile products (ISO 18184-2014)

Test Number: 2020FM24347R01, 2020FM2604R01

Test Measuring Method:

Test for antimicrobial activity of plastic (JIS Z 2801 : 2010)

Test Number: 2021FM05003R01E

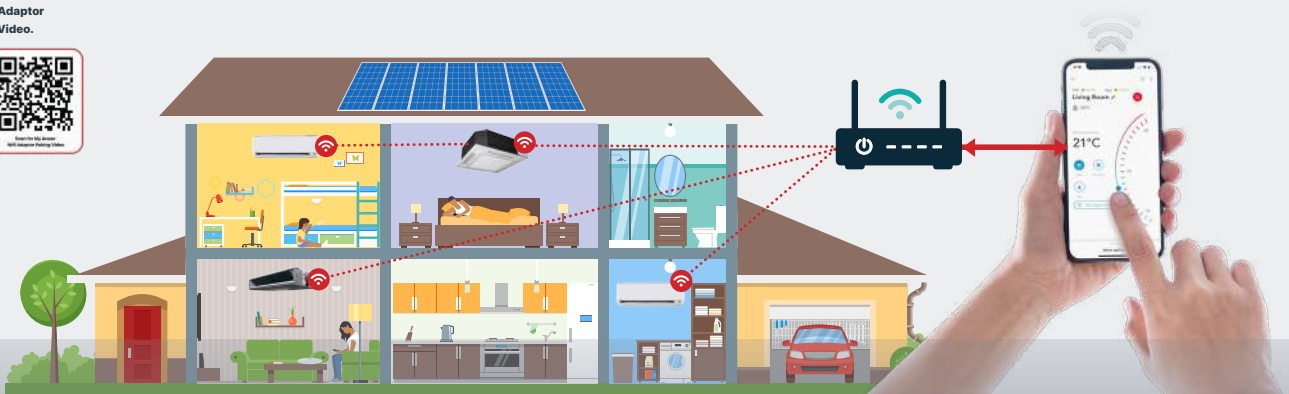
Tested Specimen	Virus		Bacteria		Fungus
	Influenza H1N1	"Chicken Coronavirus Infectious bronchitis Virus"	Esherichia Coli	Staphylococcus	Aspergillus Niger, Penicillium Pinophilum, Trichoderma viride, Chaetomium Globosum, Paecilomyces Variotii
Test Organization	Guangdong Detection Center of Microbiology				
Test Report Number	No.2020FM24347R01	No.2020FM26047R01	No.2021FM05003R01E		No.2021FM05004R01E
Test Result	99.94% in 2 hours	99.99% in 2 hours	>5.9 (99.99987%)	>4.6 (99.99749%)	Grade 0 (no fungus visible under microscope)

MY ACSON, MY CONTROL

Built in Wi-Fi : R32 Ceiling Cassette, A3CK-CF, A3CK-FF & A3CKY-FF Series

Optional Wi-Fi: R32 Ceiling Concealed A3CC-J & A3CCY-J SERIES, R32 Ceiling Mounted A3CM-C Series

Scan for My Acson Wifi Adaptor Installation and Pairing Video.



Pairing Steps

Step 1: Download and Sign Up

Download "MY Acson" app from App Store (IOS) or Google Play (Android).



Step 2: Add a new unit

Tap "+" to add new air conditioner unit. Scan the QR code stickers that can be found on the WIFI Adaptor, inside WIFI Adaptor box or warranty card*.

*WIFI built-in unit only



Step 3: Pair up success.

You can control your air conditioner with just a single tap on your mobile screen now.



Fan Speed & Temperature



User Sharing & Zoning



Weekly Timer



Operation Mode



Error Code & History



ON/OFF

LIVE SMART WITH VOICE CONTROL

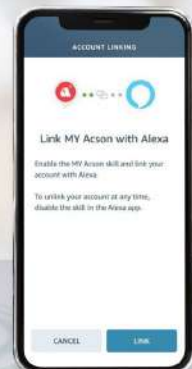
The introduction of Amazon Alexa compatibility to our air conditioners providing you a chance to have a smart home system with total climate control and comfort. Hands-free tasks by using voice control like turning the air conditioners on and off, managing the temperature and more.

Voice Control

One Command Multiple Air Conditioners

"Alexa, turn on Aircond for Bedroom."

"Alexa, set Living Room temperature to 23."





Product Line Up

Capacity	2.0HP	2.5HP	2.8 HP	3.0HP	3.5HP	4.0HP	5.0HP
Indoor Unit							
Ceiling Cassette							
Ceiling Concealed							
Ceiling Mounted							
Outdoor Unit							

01 HIGH RELIABILITY OUTDOOR UNITS

R32 Inverter Light Commercial outdoor unit constructed with gold fin coating as standards for A3CKY20/25/28 and microchannel heat exchangers design for A3CKY30/35/40/50.

02 COATED PRINTED CIRCUIT BOARDS (PCB)

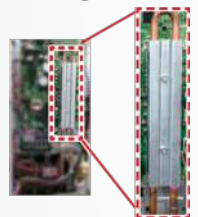
Prevents problems induced by humidity and airborne dust. It also protects against salt from contained in sea breezes. Both sides of PCB in outdoor units is coated for better assurance.

03 DURABLE QUALITY OF CASING

Adopted zinc coated heavy gauge galvanised steel, with exterior surfaces finished with a weather resistant polyester powder casing to improve the durability.

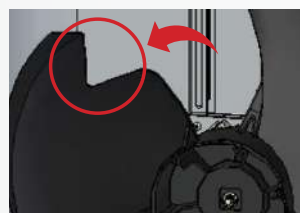
04 REFRIGERANT COOLING

An unique refrigerant cooling system helps to protect the printed circuit board and maintain high cooling capacity especially during high outdoor temperatures.

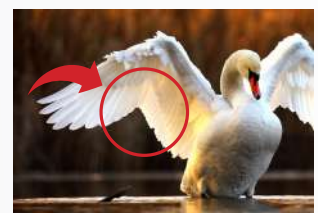


05 V-CUT PROPELLER FAN

Through the use of a V-cut propeller fan that imitates the efficiency of the swan, migratory bird where the airflow becomes smooth and loss is reduced. Therefore, the performance increases tremendously.



V-cut Propeller Fan



Imitating the performance of the swan

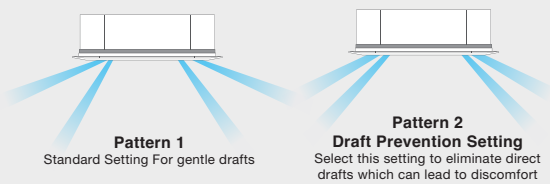
FEATURE | INVERTER CEILING CASSETTE

ONE FOR ALL PANEL DESIGN

The curvy edge and same panel size for all models enabling it to blend in perfectly with any kind of space design especially when there are multiple units installed together.

Unit Dimension
840 x 840 mm

Panel Dimension
950 x 950 mm



Pattern 1
Standard Setting For gentle drafts

Pattern 2
Draft Prevention Setting
Select this setting to eliminate direct drafts which can lead to discomfort

Pattern 3
Setting to Prevent Soiling of Ceiling
Recommended for location with light colour ceiling that must be kept spotless

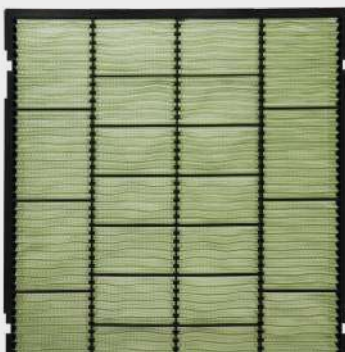
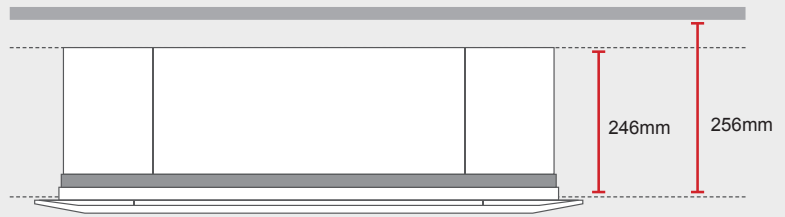
4 DIMENSIONAL COOLING COMFORT

Prioritize your cooling comfort with different airflow setting. Airflow direction can be fixed at user's designated angle by remote controller. Set the airflow pattern setting according to your need and situation.

FIT FOR TIGHT CEILING APPLICATION

Model: A3CKY20/25/28/30F
Unit Height: 246 mm

Model: A3CKY35/40/50F
Unit Height: 288 mm



INDOOR AIR PURIFICATION

Equipped with Filtronz+ filter as standard decompose virus and reduce bacteria & fungus on the filter surface with effectiveness up to 99.99%.



Virus



Bacteria



Mould



Allergen



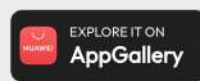
Odour

LIVE THE SMARTER WAY

Built in Wi-Fi Acson Network Adapter and ready to be paired with MY Acson app. Offering you the smart convenience to control and real time monitoring of your ceiling cassette



MY Acson

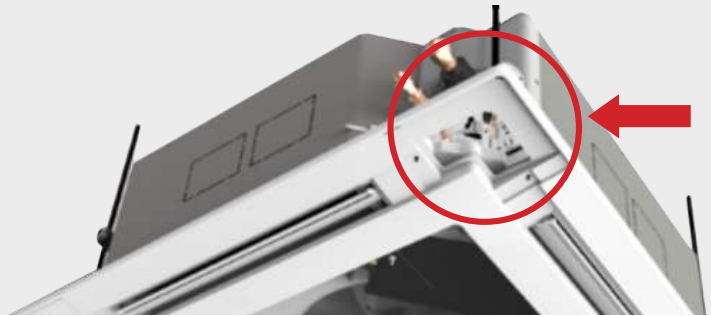


Scan for My Acson Wifi Adaptor Installation and Pairing Video.



EASY HEIGHT ADJUSTMENT

Each unit comes with adjustable cover pockets at four corners which is designed for easier adjustment of the suspended height of the unit.



PANEL HOOK MECHANISM

Support Panel with panel hook to provide hassle-free installation or serviceability by allowing to work with both hand free.



EASIER MAINTAINANCE

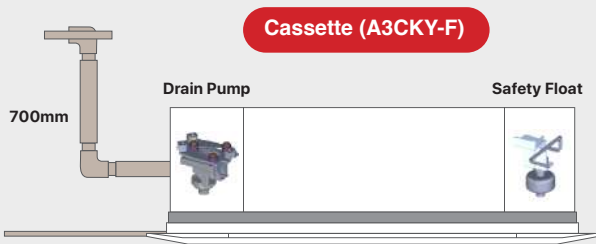
The condition of drain pan and drain water can be checked regularly by removing intake grille and drain plug.



BUILT-IN DRAIN PUMP

Comes with high head drain pump of 700mm* pressure head at standard. Drainage protection with safety float incorporated in drain pump where it functions to monitor water level and trigger drain pump to cut in when drainage water reach certain level.

* 700mm is calculated from drain pipe outlet to highest elevation point.



STANDARD SETTING GS02 WIRELESS CONTROLLER

- Receiver is in panel
- Sensing temperature of return air into intake grille



OPTIONAL WIRED CONTROLLER SLM9

SLM wired can be purchased as optional accessories. Temperature sensing can be set at the unit, or to further improve comfort level, closer to target area at the wired controller SLM9.

- Optional receiver and thermo sensor
- Sensing temperature of surrounding at human height



FEATURE | INVERTER CEILING CONCEALED

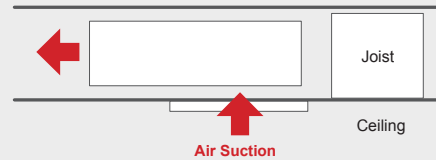
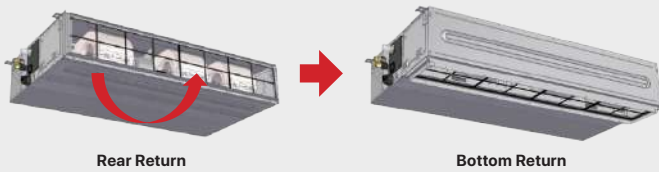
LOW UNIT HEIGHT ACROSS ALL MODELS

Designed to be able fit into ceiling height as low as 260mm. The unit can be sophisticatedly concealed for various design applications especially with low height ceiling.



EASY CONVERSION FOR FLEXIBLE INSTALLATION

Easy conversion from rear return to bottom return is possible to be able to fulfill the building structure requirement.

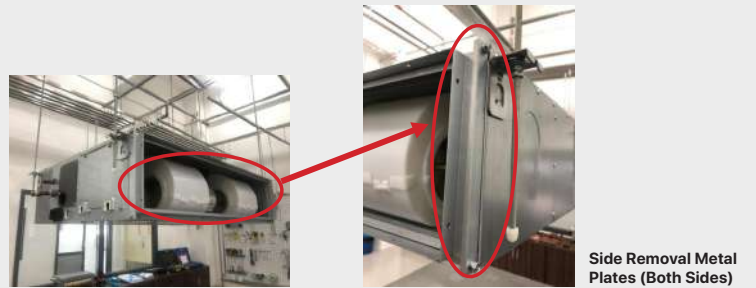


SELECTABLE EXTERNAL STATIC PRESSURE

2 different ESP setting can be selected by switching the connector inside the control box as shown as below. The adjustment can be easily done during the installation at the control box.

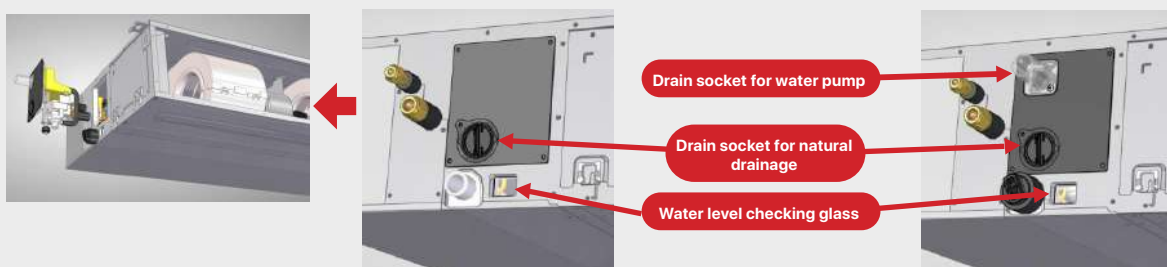
PRE-INSTALLED FILTER RAIL

Provides flexibility to install filter if required. Filters are optional purchased as accessories.



OPTIONAL DRAIN PUMP

Drain pump is optional purchased as accessories and installed at the designated location of the unit.



LIGHT WEIGHT DRAIN PAN (EPS)

Comes with EPS foam drain pan with ABS resin coating to avoid rusting and prevent condensation as it has high heat resistance. Lighter weight of units for the ease of the installation and slope design to drain water efficiently.



EPS foam drain pan with ABS resin coating

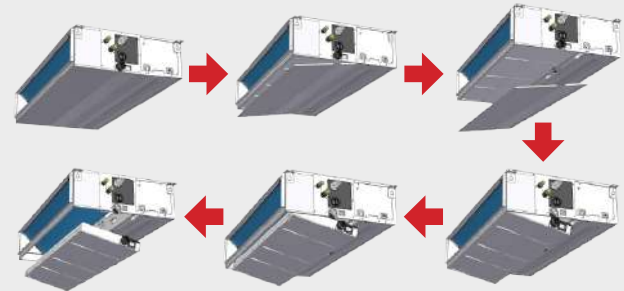
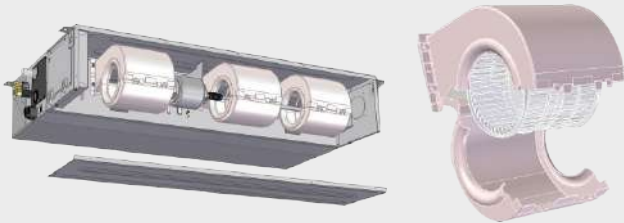


Drain Pan Slope Design

EASY ACCESS AND SERVICABILITY

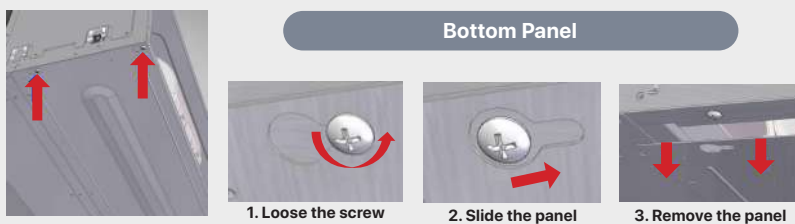
Blowers and motors can be easily accessible by just removing bottom panel and mid flange as shown as below. Blowers can be removed from the housing easily as well by opening the housing case

Drain Pan and Coil can be easily accessible by removing front bottom panel and mid flange. The steps are illustrated as below. Coil can be accessed once the drain pan is removed.



PRE-HOLDING MECHANISM

Bottom and Control Box is designed with Pre-Holding Mechanism to ease the installation by reducing the manpower needed.



DRAIN PAN MAINTENANCE CHECK WINDOW

Drainage or dirt in the pan could be easily checked without requiring any additional tools.



Drain pump slot
Drain pan inspection window

OPTIONAL NS SPLITTER WITH NETWORK ADAPTER

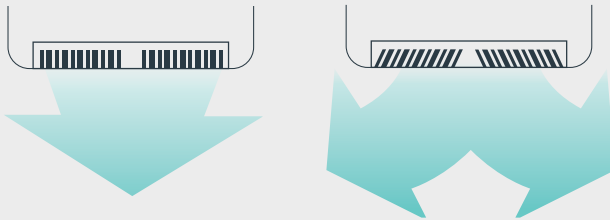
With optional purchase of NS Splitter which comes together with network adapter, enjoy the smart convenience of cooling comfort control and real time monitoring at your fingertips.



FEATURE | INVERTER CEILING MOUNTED

COMPACT & WHITE CLASSY DESIGN

The compact & white classy design integrates into any interior, enhancing its placement and blending seamlessly.

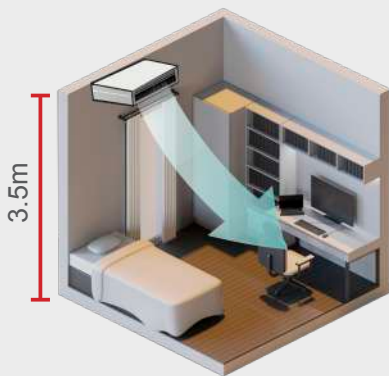


FLEXIBLE AIR SWING

Acson Ceiling Mounted Inverter features wide-angle louvres and an auto-swing capability, ensuring efficient distribution of cool air throughout the entire room or area. Air flow direction can be easily adjusted, auto vertical swing (up and down) and manual setting of horizontal airflow (left and right) to accommodate your cooling need.

HIGH CEILING APPLICATION

Designed to accommodate high-ceiling applications, it ensures efficient distribution of cool air through powerful airflow.



2.0HP - 2.8HP



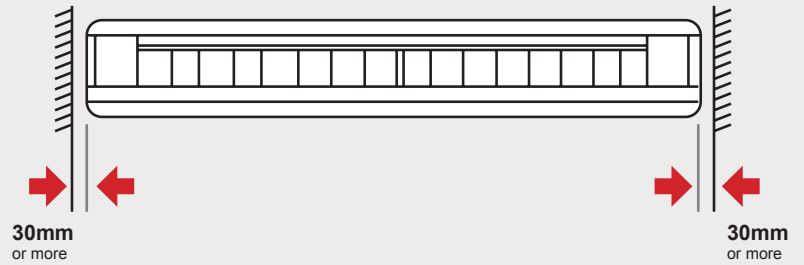
3.0HP - 5.0HP

	2.0 HP - 2.8 HP	3.0 HP	3.5 HP - 5.0 HP
Standard Application Height	2.7m or less	3.8m or less	4.3m or less
High Ceiling Application Height	2.7m - 3.5m	3.8 - 4.3m	-

DESIGNED FOR FLEXIBILITY

The unit has been specifically designed to accommodate tight space applications.

*Water used in test run can be drained from the air discharge opening rather from the side as was formerly the case.



MAINTENANCE AT EASE

- All wiring and internal servicing can be conveniently performed from underneath the unit.
- It features a non-flocking flap design that prevents the formation of condensation and resists dirt accumulation. This design makes cleaning an uncomplicated task.
- Easily cleanable flat surfaces, allowing easier wiping of dirt from both the flat side and lower areas of the unit.
- Simplified piping work for the rear side through the use of a detachable frame.

UNINTERRUPTED COOLING COMFORT

The DC fan motor (3.0HP-5.0HP class), wide sirocco fan, and large heat exchanger technology synergize for enhanced airflow and quiet operation. We prioritize the essential consumer need for quiet operation, particularly in situations requiring focus and relaxation



TECHNICAL SPECIFICATION

INVERTER CEILING CASSETTE



Model	Indoor Unit		A3CKY20FF	A3CKY25FF	A3CKY28FF	A3CKY30FF	A3CKY35FF	A3CKY40FF	A3CKY50FF	
	Outdoor Unit		A3LCY20F	A3LCY25F	A3LCY28F	A3LCY30F	A3LCY35F	A3LCY40F	A3LCY50F	
Capacity	HP		2.0HP	2.5HP	2.8HP	3.0HP	3.5HP	4.0HP	5.0HP	
Nominal Cooling Capacity	BTU/h		18,500 (7,800-19,100)	20,500 (8,900-21,500)	24,200 (10,900-27,300)	30,000 (14,300-34,100)	36,000 (17,100-38,200)	42,000 (19,500-47,800)	48,000 (21,200-52,900)	
	kW		5.42 (2.30-5.60)	6.00 (2.60-6.30)	7.1 (3.20-8.00)	8.79 (4.20-10.00)	10.55 (5.00-11.20)	12.31 (5.70-14.00)	14.07 (6.20-15.50)	
Nominal Total Input Power	W		1,680	1,960	2,070	2,710	3,470	4,215	5,455	
Nominal Running Current	A		7.37	8.55	9.07	12.00	15.3	6.48	8.38	
EER	W/W		3.23	3.07	3.43	3.24	3.04	2.92	2.58	
CPSF	Wh/Wh		4.47	4.34	4.78	4.67	4.68	4.29	4.10	
Power Source	V/Ph/Hz		220-240/1/50					380-415/3/50		380-415/3/50
			Power from OUTDOOR							
Indoor Unit	Air Flow (H/M/L/Q)		CFM	890/760/ 620/490	890/760/ 620/490	890/760/ 620/490	890/760/ 620/490	1120/1030/ 890/760	1120/1030/ 890/760	1120/1030/ 890/760
	Sound Pressure Level (H/M/L/Q)		dBA	44/40/37/35	44/40/37/35	44/40/37/35	44/40/37/35	48/46/43/40	48/46/43/40	48/46/43/40
	Unit Dimensions (H x W x D)	Unit	mm (in)	246 x 840 x 840 (9.69 x 33.07 x 33.07)	246 x 840 x 840 (9.69 x 33.07 x 33.07)	246 x 840 x 840 (9.69 x 33.07 x 33.07)	246 x 840 x 840 (9.69 x 33.07 x 33.07)	288 x 840 x 840 (11.34 x 33.07 x 33.07)	288 x 840 x 840 (11.34 x 33.07 x 33.07)	288 x 840 x 840 (11.34 x 33.07 x 33.07)
		Packaging	mm (in)	324 x 922 x 922 (12.76 x 36.30 x 36.30)	324 x 922 x 922 (12.76 x 36.30 x 36.30)	324 x 922 x 922 (12.76 x 36.30 x 36.30)	324 x 922 x 922 (12.76 x 36.30 x 36.30)	370 x 922 x 922 (14.57 x 36.30 x 36.30)	370 x 922 x 922 (14.57 x 36.30 x 36.30)	370 x 922 x 922 (14.57 x 36.30 x 36.30)
	Panel Dimensions (H x W x D)	Panel	mm (in)	65 x 950 x 950 (2.56 x 37.40 x 37.40)	65 x 950 x 950 (2.56 x 37.40 x 37.40)	65 x 950 x 950 (2.56 x 37.40 x 37.40)	65 x 950 x 950 (2.56 x 37.40 x 37.40)	65 x 950 x 950 (2.56 x 37.40 x 37.40)	65 x 950 x 950 (2.56 x 37.40 x 37.40)	65 x 950 x 950 (2.56 x 37.40 x 37.40)
		Packaging	mm (in)	116 x 1,008 x 990 (4.57 x 39.69 x 38.98)	116 x 1,008 x 990 (4.57 x 39.69 x 38.98)	116 x 1,008 x 990 (4.57 x 39.69 x 38.98)	116 x 1,008 x 990 (4.57 x 39.69 x 38.98)	116 x 1,008 x 990 (4.57 x 39.69 x 38.98)	116 x 1,008 x 990 (4.57 x 39.69 x 38.98)	116 x 1,008 x 990 (4.57 x 39.69 x 38.98)
	Unit Weight		kg	22	22	22	22	25	25	25
	Panel Weight		kg	5	5	5	5	5	5	5
	Condensate Drain Size		mm	19	19	19	19	19	19	19
	Outdoor Unit	Sound Pressure Level		dBA	52	52	52	53	54	54
Unit Dimension (H x W x D)		mm (in)	615 x 845 x 300 (24.21 x 33.27 x 11.81)	615 x 845 x 300 (24.21 x 33.27 x 11.81)	615 x 845 x 300 (24.21 x 33.27 x 11.81)	695 x 930 x 350 (27.36 x 36.61 x 13.78)	695 x 930 x 350 (27.36 x 36.61 x 13.78)	990 x 940 x 320 (38.98 x 37.01 x 12.60)	990 x 940 x 320 (38.98 x 37.01 x 12.60)	
Unit Weight		kg	37	37	37	40	40	62	62	
Pipe Connection		Liquid	mm (in)	6.4 (1/4)	6.4 (1/4)	9.5 (3/8)	9.5 (3/8)	9.5 (3/8)	9.5 (3/8)	9.5 (3/8)
		Gas	mm (in)	12.7 (1/2)	12.7 (1/2)	15.9 (5/8)	15.9 (5/8)	15.9 (5/8)	15.9 (5/8)	15.9 (5/8)
Maximun Piping Length		m (ft)	30 (98.43)	30 (98.43)	30 (98.43)	50 (164.04)	50 (164.04)	50 (164.04)	50 (164.04)	
Maximun Piping Elevation		m (ft)	15 (49.21)	15 (49.21)	15 (49.21)	30 (98.43)	30 (98.43)	30 (98.43)	30 (98.43)	
Refrigerant			R32	R32	R32	R32	R32	R32	R32	

1. All specifications are subjected to change by the manufacturer without prior notice

2. Nominal Cooling Capacity is based on the conditions : Cooling 27°C DB/ 19°C WB indoor and 35°C DB outdoor.



*1st year free labour and compressor.
*2nd - 5th year free compressor only.



GS02 (Default)



SLM9 (Optional)



A3LCY20/25/28F



A3LCY30/35F



A3LCY40/50F

TECHNICAL SPECIFICATION

INVERTER CEILING CONCEALED



Model	Indoor Unit	A3CCY20J	A3CCY25J	A3CCY28J	A3CCY30J	A3CCY35J	A3CCY40J	A3CCY50J		
	Outdoor Unit	A3LCY20F	A3LCY25F	A3LCY28F	A3LCY30F	A3LCY35F	A3LCY40F	A3LCY50F		
Capacity	HP	2.0HP	2.5HP	2.8HP	3.0HP	3.5HP	4.0HP	5.0HP		
Nominal Cooling Capacity	BTU/h	18,500 (7,800-19,100)	20,500 (8,900-21,500)	24,200 (10,900-27,300)	30,000 (14,300-34,100)	36,000 (17,100-38,200)	42,000 (19,500-47,800)	48,000 (21,200-52,900)		
	kW	5.42 (2.30-5.60)	6.00 (2.60-6.30)	7.1 (3.20-8.00)	8.79 (4.20-10.00)	10.55 (5.00-11.20)	12.31 (5.70-14.00)	14.07 (6.20-15.50)		
Nominal Total Input Power	W	1,940	2,300	2,105	2,770	3,520	4,680	5,390		
Nominal Running Current	A	8.51	10.10	9.20	12.40	15.60	7.23	8.24		
EER	W/W	2.79	2.61	3.37	3.17	3.00	2.63	2.61		
CPSF	Wh/Wh	4.16	4.13	4.36	4.76	4.59	3.98	4.38		
Power Source	V/Ph/Hz	220-240/1/50	220-240/1/50	220-240/1/50	220-240/1/50	220-240/1/50	380-415/3/50	380-415/3/50		
		Power from OUTDOOR	Power from OUTDOOR	Power from OUTDOOR	Power from OUTDOOR	Power from OUTDOOR	Power from OUTDOOR	Power from OUTDOOR		
Indoor Unit	Air Flow (H,M,L)	CFM	590/525/430	590/525/430	950/810/700	950/810/700	1260/1,095/920	1260/1,095/920	1260/1,095/920	
	External Static Pressure (Std, High)	Pa	30/50	30/50	30/50	30/50	50/80	50/80	50/80	
	Sound Pressure Level (H/M/L)	dBA	40/37/34	40/37/34	41/38/35	41/38/35	42/39/36	42/39/36	42/39/36	
	Unit Dimensions (H x W x D)	Unit	mm (in)	250 x 700 x 700 (9.84 x 27.56 x 27.56)	250 x 700 x 700 (9.84 x 27.56 x 27.56)	250 x 1,000 x 700 (9.84 x 39.37 x 27.56)	250 x 1,000 x 700 (9.84 x 39.37 x 27.56)	250 x 1,400 x 700 (9.84 x 55.12 x 27.56)	250 x 1,400 x 700 (9.84 x 55.12 x 27.56)	250 x 1,400 x 700 (9.84 x 55.12 x 27.56)
		Packaging	mm (in)	337 x 916 x 924 (13.27 x 36.06 x 36.38)	337 x 916 x 924 (13.27 x 36.06 x 36.38)	"337 x 1,216 x 924 (13.27 x 47.87 x 36.38)"	337 x 1,216 x 924 (13.27 x 47.87 x 36.38)	337 x 1,616 x 924 (13.27 x 63.62 x 36.38)	337 x 1,616 x 924 (13.27 x 63.62 x 36.38)	337 x 1,616 x 924 (13.27 x 63.62 x 36.38)
	Unit Weight	kg	24	24	31	31	40	40	42	
	Condensate Drain Size	mm	32	32	32	32	32	32	32	
Outdoor Unit	Sound Pressure Level	dBA	52	52	52	53	54	54	56	
	Unit Dimension (H x W x D)	mm (in)	615 x 845 x 300 (24.21 x 33.27 x 11.81)	615 x 845 x 300 (24.21 x 33.27 x 11.81)	615 x 845 x 300 (24.21 x 33.27 x 11.81)	695 x 930 x 350 (27.36 x 36.61 x 13.60)	695 x 930 x 350 (27.36 x 36.61 x 13.60)	990 x 940 x 320 (38.98 x 37.01 x 12.60)	990 x 940 x 320 (38.98 x 37.01 x 12.60)	
	Unit Weight	kg	37	37	37	40	40	62	62	
	Pipe Connection	Liquid	mm (in)	6.4 (1/4)	6.4 (1/4)	9.5 (3/8)	9.5 (3/8)	9.5 (3/8)	9.5 (3/8)	9.5 (3/8)
		Gas	mm (in)	12.7 (1/2)	12.7 (1/2)	15.9 (5/8)	15.9 (5/8)	15.9 (5/8)	15.9 (5/8)	15.9 (5/8)
	Maximun Piping Length	m (ft)	30 (98.43)	30(98.43)	30 (98.43)	50 (164.04)	50 (164.04)	50 (164.04)	50 (164.04)	
	Maximun Piping Elevation	m (ft)	15 (49.21)	15(49.21)	15 (49.21)	30 (98.43)	30 (98.43)	30 (98.43)	30 (98.43)	
Refrigerant		R32	R32	R32	R32	R32	R32	R32		

1. All specifications are subjected to change by the manufacturer without prior notice

2. Nominal Cooling Capacity is based on the conditions : Cooling 27°C DB/ 19°C WB indoor and 35°C DB outdoor



*1st year free labour and compressor.
*2nd - 5th year free compressor only.



GS02 (Optional)



SLM9 (Default)



A3LCY20/25/28F



A3LCY30/35F



A3LCY40/50F

TECHNICAL SPECIFICATION

INVERTER CEILING MOUNTED



Model	Indoor Unit		A3CMY20A	A3CMY25A	A3CMY28A	A3CMY30A	A3CMY35A	A3CMY40A	A3CMY50A		
	Outdoor Unit		A3LCY20F	A3LCY25F	A3LCY28F	A3LCY30F	A3LCY35F	A3LCY40F	A3LCY50F		
Capacity	HP		2.0HP	2.5HP	2.8HP	3.0HP	3.5HP	4.0HP	5.0HP		
Nominal Cooling Capacity	BTU/h		17,100 (7,800-19,100)	20,500 (8,900-21,500)	24,200 (10,900-27,300)	29,000 (14,300-34,100)	34,100 (17,100-38,200)	42,700 (19,500-47,800)	47,800 (21,200-52,900)		
	kW		5.00 (2.30-5.60)	6.00 (2.60-6.30)	7.1 (3.20-8.00)	8.50 (4.20-10.00)	10.00 (5.00-11.20)	12.50 (5.70-14.00)	14.00 (6.20-15.50)		
Nominal Total Input Power	W		1,670	2,000	2,500	2,990	3,520	4,880	6,070		
EER	W/W		3.00	3.00	2.84	2.84	2.84	2.56	2.31		
Nominal Running Current	A		7.33	8.76	11.00	13.30	15.90	6.25	11.00		
CPSF	Wh/Wh		4.30	4.30	4.09	4.09	4.09	3.82	3.71		
Power Supply	V/Ph/Hz		220-240/1/50	220-240/1/50	220-240/1/50	220-240/1/50	220-240/1/50	380-415/3/50	380-415/3/50		
Power Source			Power From Outdoor								
Indoor Unit	Air Flow	H/L	CFM	459/353	600/494	847/706	1,059/883	988/847/706	1,094/953/812	1,200/1,024/847	
	Sound Pressure Level (H/L)		dBA	38/33	39/35	42/37	44/39	42/38/34	44/41/37	46/42/38	
	Unit Dimension (H x W x D)	Unit	mm (in)	195 x 960 x 680 (7.68 x 37.80 x 26.77)	195 x 1,160 x 680 (7.68 x 45.67 x 26.77)	195 x 1,400 x 680 (7.68 x 55.12 x 26.77)	195 x 1,590 x 680 (7.68 x 62.60 x 26.77)	235 x 1,590 x 690 (9.25 x 62.60 x 27.17)	235 x 1,590 x 690 (9.25 x 62.60 x 27.17)	235 x 1,590 x 690 (9.25 x 62.60 x 27.17)	
		Packaging	mm (in)	279 x 1,046 x 818 (10.98 x 41.18 x 32.20)	279 x 1,246 x 818 (10.98 x 49.06 x 32.20)	279 x 1,486 x 818 (10.98 x 58.50 x 32.20)	279 x 1,676 x 818 (10.98 x 65.98 x 32.20)	349 x 1,746 x 878 (13.74 x 68.74 x 34.57)	349 x 1,746 x 878 (13.74 x 68.74 x 34.57)	349 x 1,746 x 878 (13.74 x 68.74 x 34.57)	
	Unit Weight		kg	25	27	32	35	38	38	38	
	Condensate Drain Size		mm	20	20	20	20	20	20	20	
	Outdoor Unit	Heat Exchanger			Gold Fin	Gold Fin	Gold Fin	MCHE	MCHE	MCHE	MCHE
Air Flow		CFM	1,464	1,464	1,464	2,186	2,186	2,885	2,885		
Sound Pressure Level		dBA	52	52	52	53	54	54	56		
Unit Dimension (H x W x D)		mm	615 x 845 x 300	615 x 845 x 300	615 x 845 x 300	695 x 930 x 350	695 x 930 x 350	990 x 940 x 320	990 x 940 x 320		
Unit Weight		kg	37	37	37	40	40	62	62		
Pipe Connection		Size	Liquid	mm (In)	6.4 (1/4)	6.4 (1/4)	9.5 (3/8)	9.5 (3/8)	9.5 (3/8)	9.5 (3/8)	9.5 (3/8)
			Gas	mm (In)	12.7 (1/2)	12.7 (1/2)	15.9 (5/8)	15.9 (5/8)	15.9 (5/8)	15.9 (5/8)	15.9 (5/8)
Max Piping Length		m	30	30	30	50	50	50	50		
Max Piping Elevation		m	15	15	15	30	30	30	30		
Refrigerant			R32	R32	R32	R32	R32	R32	R32		

1. All specifications are subjected to change by the manufacturer without prior notice
2. Nominal Cooling Capacity is based on the conditions : Cooling 27°C DB/ 19°C WB indoor and 35°C DB outdoor



BRC7EA66/BRC7GA56

BRC2E61

A3LCY20/25/28F

A3LCY30/35F

A3LCY40/50F

FUNCTIONALITY



✓ Standard ✓ Optional

Category	Functions	Ceiling Cassette	Ceiling Concealed	Ceiling Mounted
Operation	Auto Mode	✓	✓	
	Cool Mode	✓	✓	✓
	Dry Mode	✓	✓	✓
	Fan Mode	✓	✓	✓
Comfort	4-Ways Airflow	✓		
Convenience	Auto Fan Speed	✓	✓	✓
	Indor unit On/Off Button	✓		
	Signal Receiving Sign	✓		
	Weekly Timer	✓	✓	
	24-Hour On/Off Timer	✓	✓	✓
Feature	Auto Swing	✓		✓
	Swing Pattern Selection	✓		✓
	Switchable Fan Speed	✓	✓	✓
	Anti- Corrosion Outdoor Gold Fin	2.0HP – 2.8HP	2.0HP – 2.8HP	2.0HP – 2.8HP
	Microchannel Heat Exchanger	3.0HP – 5.0HP	3.0HP – 5.0HP	3.0HP – 5.0HP
Health	Saranet Filter		✓	
	Filtronz+ Filter	✓		
	Anti-Bacterial Filter			✓
	Washable Grille	✓		✓
Durability	Power Failure Memory System	✓	✓	✓
	Self Diagnosis	✓	✓	✓
	Wiring Error Check Function	✓		
Accessory	Wireless Remote Controller	✓	✓	✓
	Wired Remote Controller	✓	✓	✓
	External Static Pressure Selection		✓	
	Drain Pump	✓	✓	
	Switchable Temperature Display (°C/°F)	✓	✓	

1. All specifications are subjected to change by the manufacturer without prior notice.



ACSON MALAYSIA SALES & SERVICE SDN.BHD.
a member of **DAIKIN** group

Business Registration NO.198401017130 (129688-D)

No. 7A, Jalan 13/4, Seksyen 13, 46200 Petaling Jaya,
Selangor Darul Ehsan, MALAYSIA.

Tel : +603 7964 8200 Sales Fax : +603 7956 9909

Service Fax : +603 7956 9907 Acson Careline : 1300 22 3344

Penang : +604-5377 176
Perak : +605-3129 828
Melaka : +606-2926 196
Johor : +607-3551 599

Pahang : +609-5178 696
Kelantan : +609-7405 233
Sarawak : +6082-344 128
Sabah : +6088-420 205

Authorized Dealer :



Products manufactured in an ISO certified facility.
This document contains the most current product information as of this printing.
For the most up-to-date product information, please logon to www.acson.com.my

A3CKY,A3CCY,A3CMY-2402

www.acson.com.my