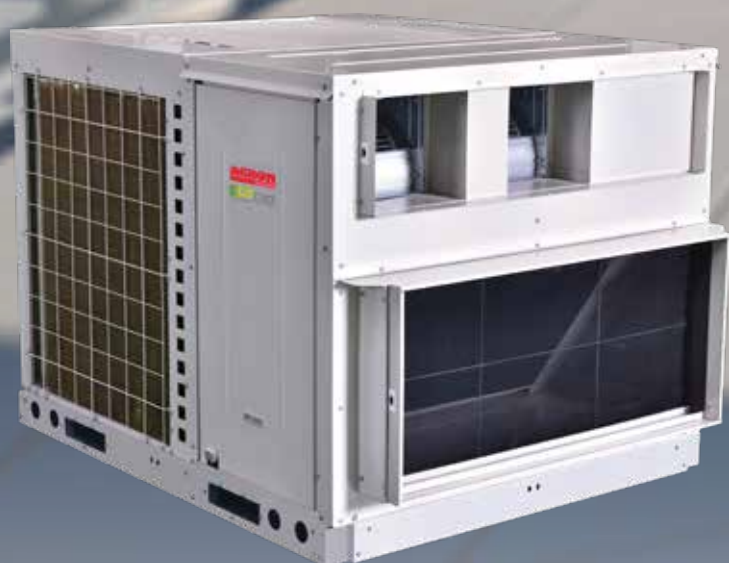


# ROOF-TOP SERIES

Complete Package



**ART-A/C**

**A4RT-A**

**A5RT-C**

# ROOFTOP Series

## Complete Package



### A Series

**Model :**  
ART60A - 420A

**Cooling Capacity :**  
59,000BTU/h - 404,000BTU/h

**Static Pressure :**  
0.4 in Wg - 1.2 in Wg

**Refrigerant :**  
R22

**Model :**  
A4RT60A - 420A

**Cooling Capacity :**  
59,000BTU/h - 415,000BTU/h

**Static Pressure :**  
0.39 in Wg - 1.2 in Wg

**Refrigerant :**  
R407C



### C Series

**Model :**  
ART150C - ART300C

**Cooling Capacity :**  
142,500BTU/h - 295,000BTU/h

**Static Pressure :**  
0.6 in Wg - 1.0 in Wg

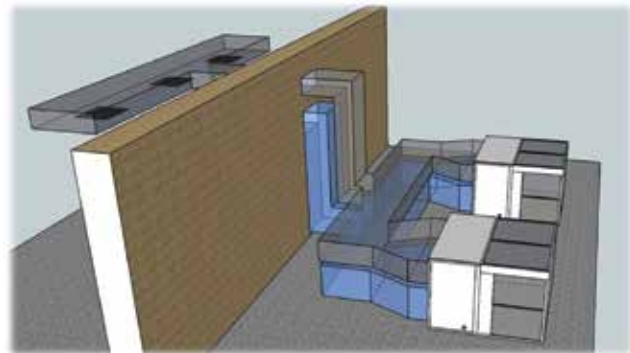
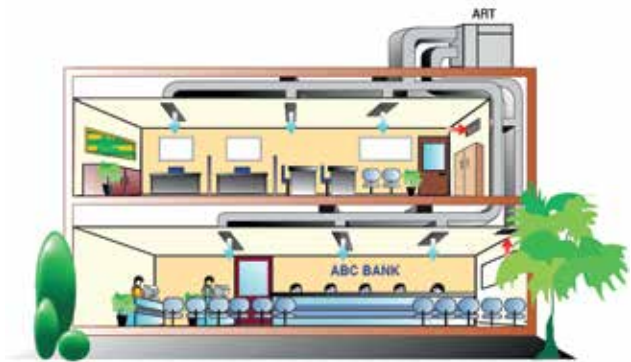
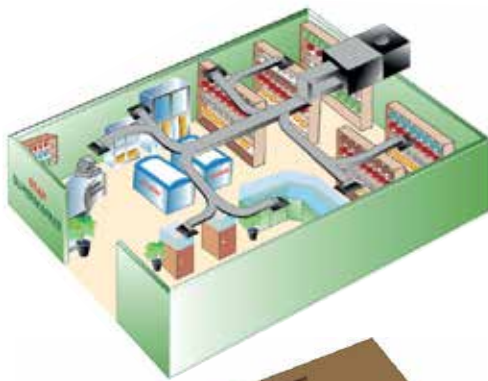
**Refrigerant :**  
R22

**Model :**  
A5RT60C - 300C

**Cooling Capacity :**  
61,000BTU/h - 301,000BTU/h

**Static Pressure :**  
0.4 in Wg - 1.0 in Wg

**Refrigerant :**  
R410A



Acson Rooftop package unit is a versatile unit as it can be installed on various locations. It is hassle free as the need for copper piping between indoor and outdoor coupling is eliminated. An even distribution of cool air can be achieved through ducting. Through proper ductwork, induction of fresh air will yield a better air quality. Come rain or shine, you can expect Acson rooftop package still standing tall. Our condenser coil is available in gold fin, giving maximum protection in normal or harsher environment.

**● Cabinet & Base Construction**

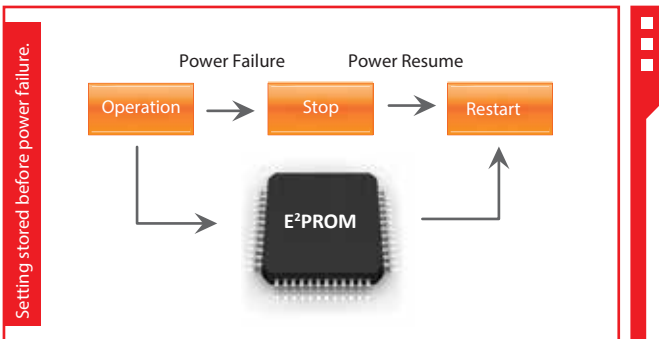
Acson ART Series is equipped with a solid base foundation and compact cabinet. The weather proofed electro-galvanized mild steel casing is coated with epoxy polyester powder for protection against corrosion. Forklift slots and rigging hole is provided for better handling purpose. All ART designs are rigorously rain tested at the factory to ensure high water integrity.

**● Flexibility of Air Supply**

Acson ART Series utilises belt driven fan such that the air volume and static pressure required can be adjusted according to the requirement. This flexibility allows for wider application.

**● Automatic Restart**

In the event of a sudden power failure, the unit can be automatically restarted once the power supply is back to normal and keeping the last setting condition (subject to certain protection conditions). No more hassle.



**● Compact Design**

The compact size of the ART allows for high space utilization. The foot print of the unit is very small, hence minimise the installation area required.

**● Flat Top Design**

The ART's flat top design allows for maximum utilization of warehouse and container space. The unit can be stacked up such that the space is fully utilized.

**● Peace of Mind Service**

With nationwide service points, there must be one around you to provide fast and reliable service when assistance is needed.



\* Please refer to our warranty policy

**● Power is nothing without Control**

Acson ART Series is equipped with Electronic Wired Controller, the SLM Controller and Sequential Controller.

Partial loading of system is available for model with multiple compressor.

- SLM 3



Features:

- Temperature and fan speed selection
- Mode Selection
- On/Off timer with 1-hour interval (maximum 15 hours)
- Infrared sensor to receive signals from wireless control (optional)
- Error indicator

- SLM 9



Features:

- Temperature and fan speed selection
- Mode Selection
- On/Off timer with 1-hour interval (maximum 15 hours)
- Infrared sensor to receive signals from wireless control (optional)
- Error indicator
- Key pad lock
- Built-in thermostat

- Sequential Controller



Features:

- Temperature and fan speed selection
- Mode Selection
- On/Off 7 days timer
- Error indicator
- Key pad lock

\*Features available is model dependent

## Rooftop Packaged Unit (ART-A)

MODEL		ART 60A	ART 80A	ART 100A	ART 120A	ART 150C	
NOMINAL CAPACITY	BTU/h	59,000	80,000	100,000	116,000	142,500	
	kW	17.29	23.44	29.30	33.99	41.75	
NOMINAL TOTAL INPUT POWER	W	5,610	8,100	10,500	11,560	13,070	
NOMINAL RUNNING CURRENT	A	10.4	15.4	18.2	22.1	24.8	
EER	BTU/h/W	10.52	9.88	9.52	10.03	10.90	
	W/W	3.08	2.89	2.79	2.94	3.19	
POWER SOURCE	V/Ph/Hz	380 - 415 / 3 / 50	380 - 415 / 3 / 50	380 - 415 / 3 / 50	380 - 415 / 3 / 50	380 - 415 / 3 / 50	
CONTROL	OPERATION	WIRED (SLM & SEQUENTIAL)					
	EVAPORATOR FAN DRIVE	BELT DRIVEN					
	AIR DISCHARGE	HORIZONTAL AND NON-CONVERTIBLE	CONVERTIBLE	CONVERTIBLE	CONVERTIBLE	HORIZONTAL AND NON-CONVERTIBLE	
AIR FLOW	l/s / CFM	850 / 1,800	1,334 / 2,826	1,667 / 3,532	1,699 / 3,600	2,173 / 4,600	
EXTERNAL STATIC PRESSURE	Pa / in.wg.	98 / 0.4	98 / 0.4	98 / 0.4	98 / 0.4	125 / 0.5	
REFRIGERANT TYPE / CONTROL		TXV	CAPILLARY TUBE	CAPILLARY TUBE	TXV	TXV	
SOUND PRESSURE LEVEL	dBA	63	65	66	68	66	
UNIT DIMENSION	HEIGHT	mm/in	1,000 / 39.4	1,000 / 39.4	1,000 / 39.4	1,000 / 39.4	1,390 / 54.8
	WIDTH	mm/in	1,100 / 43.4	1,300 / 51.2	1,300 / 51.2	1,300 / 51.2	1,965 / 77.4
	DEPTH	mm/in	1,530 / 60.3	1,530 / 60.2	1,530 / 60.2	1,530 / 60.2	1,630 / 64.2
PACKING DIMENSION	HEIGHT	mm/in	1,090 / 42.9	1,090 / 42.9	1,090 / 42.9	1,090 / 42.9	1,540 / 60.6
	WIDTH	mm/in	1,250 / 49.2	1,450 / 57.1	1,450 / 57.1	1,450 / 57.1	2,150 / 84.6
	DEPTH	mm/in	1,680 / 66.1	1,680 / 66.1	1,680 / 66.1	1,680 / 66.1	1,935 / 76.2
UNIT WEIGHT	kg/lb	295 / 650	370 / 816	400 / 882	425 / 937	600 / 1,320	
REFRIGERANT	TYPE	R22					
	CHARGE	kg/lb	5.2 / 11.5	4.0 / 8.8	5.9 / 13	6.2 / 13.7	4.6 + 4.6 / 10.1 + 10.1

MODEL		ART 180C	ART 240C	ART 300C	ART 360A	ART 420A	
NOMINAL CAPACITY	BTU/h	183,500	244,000	295,000	329,000	404,000	
	kW	53.77	71.49	86.44	96.40	118.37	
NOMINAL TOTAL INPUT POWER	W	16,920	23,000	28,360	39,870	46,800	
NOMINAL RUNNING CURRENT	A	31.3	40.0	53.2	67.2	72.8	
EER	BTU/h/W	10.85	10.61	10.40	8.25	8.63	
	W/W	3.18	3.11	3.05	2.42	2.53	
POWER SOURCE	V/Ph/Hz	380 - 415 / 3 / 50	380 - 415 / 3 / 50	380 - 415 / 3 / 50	380 - 415 / 3 / 50	380 - 415 / 3 / 50	
CONTROL	OPERATION	WIRED (SLM & SEQUENTIAL)					
	EVAPORATOR FAN DRIVE	BELT DRIVEN					
	AIR DISCHARGE	HORIZONTAL AND NON-CONVERTIBLE	HORIZONTAL AND NON-CONVERTIBLE	HORIZONTAL AND NON-CONVERTIBLE	HORIZONTAL AND NON-CONVERTIBLE	HORIZONTAL AND NON-CONVERTIBLE	
AIR FLOW	l/s / CFM	3,068 / 6,500	3,729 / 7,900	4,101 / 8,700	5,191 / 11,000	5,899 / 12,500	
EXTERNAL STATIC PRESSURE	Pa / in.wg.	150 / 0.6	200 / 0.8	250 / 1.0	300 / 1.2	300 / 1.2	
REFRIGERANT TYPE / CONTROL		TXV	TXV	TXV	TXV	TXV	
SOUND PRESSURE LEVEL	dBA	68	68	73	70	70	
UNIT DIMENSION	HEIGHT	mm/in	1,390 / 54.8	1,690 / 66.6	1,650 / 65.2	1,974 / 78.0	1,974 / 78.0
	WIDTH	mm/in	1,965 / 77.4	1,965 / 77.4	2,410 / 95.7	2,252 / 89.0	2,252 / 89.0
	DEPTH	mm/in	1,630 / 64.2	1,905 / 75.0	2,030 / 80.4	3,180 / 125.0	3,180 / 125.0
PACKING DIMENSION	HEIGHT	mm/in	1,540 / 60.6	1,865 / 73.4	1,875 / 73.8	2,150 / 84.5	2,150 / 84.5
	WIDTH	mm/in	2,150 / 84.6	2,150 / 84.6	2,590 / 102.0	2,300 / 90.5	2,300 / 90.5
	DEPTH	mm/in	1,935 / 76.2	2,220 / 87.4	2,270 / 89.4	3,250 / 128.0	3,250 / 128.0
UNIT WEIGHT	kg/lb	650 / 1,430	850 / 1,870	980 / 2,160	1,510 / 3,329	1,600 / 3,527	
REFRIGERANT	TYPE	R22					
	CHARGE	kg/lb	6 + 6 / 13.2 + 13.2	8 + 8 / 17.6 + 17.6	10.6 + 10.6 / 23.4 + 23.4	16.5 + 19.5 / 36.4 + 43.0	2 x 19.5 / 2 x 43.0

Note:

1. All specifications are subjected to change by the manufacturer without prior notice.
2. All units are being tested and comply to ISO 13253.
3. Gross cooling capacity are based on the conditions below:

Cooling	
Indoor	27°C DB / 19°C WB
Outdoor	35°C DB / 24°C WB

4. Indoor sound pressure level are according to JIS B 8615 standard.

Horizontal Discharge: Position of the measurement point 1.5m below the unit.

(With 1m duct connect to the inlet and 2m duct connect to the outlet)

Vertical Discharge : Position of the measurement point is 1m away from every side of the unit and 1m above floor level.

(With Tested with 2m length duct at discharge only)

## Rooftop Packaged Unit (A4RT-A)

MODEL		A4RT 60A	A4RT 80A	A4RT 100A	A4RT 120A	A4RT 150A	
NOMINAL CAPACITY	BTU/h	59,000	72,000	95,000	110,000	140,000	
	kW	17.29	21.10	27.84	32.23	41.02	
NOMINAL TOTAL INPUT POWER	W	5,890	8,700	11,600	12,180	17,200	
NOMINAL RUNNING CURRENT	A	10.9	16.3	20.2	22.8	32.1	
EER	BTU/h/W	10.02	8.28	8.19	9.03	8.14	
	W/W	2.93	2.42	2.40	2.65	2.38	
POWER SOURCE	V/Ph/Hz	380 - 415 / 3 / 50	380 - 415 / 3 / 50	380 - 415 / 3 / 50	380 - 415 / 3 / 50	380 - 415 / 3 / 50	
CONTROL	OPERATION	WIRED (SLM & SEQUENTIAL)					
	EVAPORATOR FAN DRIVE	BELT DRIVEN					
	AIR DISCHARGE	HORIZONTAL AND NON-CONVERTIBLE	CONVERTIBLE	CONVERTIBLE	CONVERTIBLE	CONVERTIBLE	
AIR FLOW	l/s / CFM	850 / 1,800	1,334 / 2,826	1,667 / 3,532	1,699 / 3,600	2,667 / 5651	
EXTERNAL STATIC PRESSURE	Pa / in.wg.	98 / 0.39	98 / 0.39	98 / 0.39	98 / 0.39	196 / 0.79	
REFRIGERANT TYPE / CONTROL		TXV	CAPILLARY TUBE	CAPILLARY TUBE	TXV	CAPILLARY TUBE	
SOUND PRESSURE LEVEL	dBA	63	65	66	68	70	
UNIT DIMENSION	HEIGHT	mm/in	1,000 / 39.4	1,000 / 39.4	1,000 / 39.4	1,000 / 39.4	1,200 / 47.2
	WIDTH	mm/in	1,100 / 43.3	1,300 / 51.2	1,300 / 51.2	1,300 / 51.2	1,990 / 78.4
	DEPTH	mm/in	1,530 / 60.2	1,530 / 60.2	1,530 / 60.2	1,530 / 60.2	1,670 / 65.7
PACKING DIMENSION	HEIGHT	mm/in	1,090 / 42.9	1,090 / 42.9	1,090 / 42.9	1,090 / 42.9	1,320 / 52.0
	WIDTH	mm/in	1,250 / 49.2	1,450 / 57.1	1,450 / 57.1	1,450 / 57.1	2,100 / 82.7
	DEPTH	mm/in	1,680 / 66.1	1,680 / 66.1	1,680 / 66.1	1,680 / 66.1	1,810 / 71.3
UNIT WEIGHT	kg/lb	295 / 650	370 / 816	400 / 882	425 / 937	665 / 1,466	
REFRIGERANT	TYPE	R407C					
	CHARGE	kg/lb	4.6 / 10.1	4.6 / 10.1	5.9 / 13	5.6 / 12.3	2 x 3.9 / 2 x 8.6

MODEL		A4RT 200A	A4RT 250A	A4RT 300A	A4RT 360A	A4RT 420A	
NOMINAL CAPACITY	BTU/h	190,000	230,000	275,000	331,000	415,000	
	kW	55.67	67.39	80.58	96.98	121.60	
NOMINAL TOTAL INPUT POWER	W	25,100	28,700	37,850	41,870	48,800	
NOMINAL RUNNING CURRENT	A	43.8	53	65.8	74.2	83.7	
EER	BTU/h/W	7.57	8.01	7.27	7.91	8.50	
	W/W	2.22	2.35	2.13	2.32	2.49	
POWER SOURCE	V/Ph/Hz	380 - 415 / 3 / 50	380 - 415 / 3 / 50	380 - 415 / 3 / 50	380 - 415 / 3 / 50	380 - 415 / 3 / 50	
CONTROL	OPERATION	WIRED (SLM & SEQUENTIAL)					
	EVAPORATOR FAN DRIVE	BELT DRIVEN					
	AIR DISCHARGE	CONVERTIBLE	HORIZONTAL AND NON-CONVERTIBLE	HORIZONTAL AND NON-CONVERTIBLE	HORIZONTAL AND NON-CONVERTIBLE	HORIZONTAL AND NON-CONVERTIBLE	
AIR FLOW	l/s / CFM	3,167 / 6710	3,776 / 8,000	4,389 / 9,300	5,191 / 11,000	5,899 / 12,500	
EXTERNAL STATIC PRESSURE	Pa / in.wg.	196 / 0.79	294 / 1.18	294 / 1.18	294 / 1.18	294 / 1.18	
REFRIGERANT TYPE / CONTROL		CAPILLARY TUBE	TXV	TXV	TXV	TXV	
SOUND PRESSURE LEVEL	dBA	70	74	74	80	80	
UNIT DIMENSION	HEIGHT	mm/in	1,200 / 47.2	1,735 / 68.0	1,735 / 68.0	1,974 / 78.0	1,974 / 78.0
	WIDTH	mm/in	1,990 / 78.4	2,250 / 88.5	2,250 / 88.5	2,252 / 89.0	2,252 / 89.0
	DEPTH	mm/in	1,670 / 65.7	2,800 / 110.0	2,800 / 110.0	3,180 / 125.0	3,180 / 125.0
PACKING DIMENSION	HEIGHT	mm/in	1,320 / 52.0	1,900 / 74.8	1,900 / 74.8	2,150 / 84.6	2,150 / 84.6
	WIDTH	mm/in	2,100 / 82.7	2,250 / 88.6	2,250 / 88.6	2,300 / 90.55	2,300 / 90.55
	DEPTH	mm/in	1,810 / 71.3	2,900 / 114.2	2,900 / 114.2	3,250 / 128.0	3,250 / 128.0
UNIT WEIGHT	kg/lb	765 / 1,687	1200 / 2,646	1,350 / 2,976	1,510 / 3,329	1,600 / 3,527	
REFRIGERANT	TYPE	R407C					
	CHARGE	kg/lb	2 x 4.2 / 2 x 9.3	2 x 9.6 / 2 x 21.2	2 x 10.4 / 2 x 22.9	14.5 + 18.0 / 32.0 + 39.7	2 x 18.0 / 2 x 39.7

Note:

- All specifications are subjected to change by the manufacturer without prior notice.
- All units are being tested and comply to ISO 13253.
- Gross cooling capacity are based on the conditions below:

Cooling	
Indoor	27°C DB / 19°C WB
Outdoor	35°C DB / 24°C WB

- Indoor sound pressure level are according to JIS B 8615 standard.

Horizontal Discharge : Position of the measurement point 1.5m below the unit.

(With 1m duct connect to the inlet and 2m duct connect to the outlet)

Vertical Discharge : Position of the measurement point is 1m away from every side of the unit and 1m above floor level.

(With Tested with 2m length duct at discharge only)

## Rooftop Packaged Unit (A5RT-C)

MODEL		A5RT 60C	A5RT 90C	A5RT 120C	A5RT 150C	
NOMINAL CAPACITY	BTU/h	61,000	90,000	121,500	150,000	
	kW	17.87	26.37	35.60	43.95	
NOMINAL TOTAL INPUT POWER	W	4,520	7,200	9,450	12,000	
NOMINAL RUNNING CURRENT	A	8.2	13.5	17.0	24.1	
EER	BTU/h/W	13.50	12.50	12.86	12.50	
	W/W	3.95	3.66	3.77	3.66	
POWER SOURCE	V/Ph/Hz	380 - 415 / 3 / 50	380 - 415 / 3 / 50	380 - 415 / 3 / 50	380 - 415 / 3 / 50	
CONTROL	OPERATION	WIRED (SEQUENTIAL CONTROLLER)				
	EVAPORATOR FAN DRIVE	BELT DRIVEN				
	AIR DISCHARGE	HORIZONTAL AND NON-CONVERTIBLE	HORIZONTAL AND NON-CONVERTIBLE	HORIZONTAL AND NON-CONVERTIBLE	HORIZONTAL AND NON-CONVERTIBLE	
AIR FLOW	l/s / CFM	944 / 2,000	1,321 / 2,800	2,077 / 4,400	2,360 / 5,000	
EXTERNAL STATIC PRESSURE	Pa / in.wg.	100 / 0.4	100 / 0.4	100 / 0.4	150 / 0.6	
REFRIGERANT TYPE / CONTROL		TXV	TXV	TXV	TXV	
SOUND PRESSURE LEVEL	dBA	61	62	65	67	
UNIT DIMENSION	HEIGHT	mm/in	1,150 / 45.3	1,350 / 53.1	1,390 / 54.7	1,390 / 54.7
	WIDTH	mm/in	1,280 / 50.4	1,280 / 50.4	1,965 / 77.4	1,965 / 77.4
	DEPTH	mm/in	1,520 / 59.8	1,520 / 59.8	1,630 / 64.2	1,630 / 64.2
PACKING DIMENSION	HEIGHT	mm/in	1,270 / 50.0	1,410 / 55.5	1,440 / 56.7	1,440 / 56.7
	WIDTH	mm/in	1,320 / 52.0	1,320 / 52.0	2,020 / 79.5	2,020 / 79.5
	DEPTH	mm/in	1,710 / 67.3	1,710 / 67.3	1,840 / 72.44	1,840 / 72.44
UNIT WEIGHT	kg/lb	370 / 816	400 / 882	620 / 1,367	680 / 1,499	
REFRIGERANT	TYPE	R410A				
	CHARGE	kg/lb	9.0 / 19.84	11.5 / 25.35	5.2 x 2 / 11.46 x 2	8.5 x 2 / 18.74 x 2

MODEL		A5RT 180C	A5RT 210C	A5RT 240C	A5RT 300C	
NOMINAL CAPACITY	BTU/h	181,000	213,000	241,000	304,000	
	kW	53.03	62.41	70.61	89.07	
NOMINAL TOTAL INPUT POWER	W	14,720	16,900	19,280	24,520	
NOMINAL RUNNING CURRENT	A	27.2	33.9	38.7	46.0	
EER	BTU/h/W	12.30	12.60	12.50	12.40	
	W/W	3.60	3.69	3.66	3.63	
POWER SOURCE	V/Ph/Hz	380 - 415 / 3 / 50	380 - 415 / 3 / 50	380 - 415 / 3 / 50	380 - 415 / 3 / 50	
CONTROL	OPERATION	WIRED (SEQUENTIAL CONTROLLER)				
	EVAPORATOR FAN DRIVE	BELT DRIVEN				
	AIR DISCHARGE	HORIZONTAL AND NON-CONVERTIBLE	HORIZONTAL AND NON-CONVERTIBLE	HORIZONTAL AND NON-CONVERTIBLE	HORIZONTAL AND NON-CONVERTIBLE	
AIR FLOW	l/s / CFM	3,304 / 7,000	3,587 / 7,600	3,776 / 8,000	4,248 / 9,000	
EXTERNAL STATIC PRESSURE	Pa / in.wg.	150 / 0.6	200 / 0.8	200 / 0.8	250 / 1.0	
REFRIGERANT TYPE / CONTROL		TXV				
SOUND PRESSURE LEVEL	dBA	68	69	72	72	
UNIT DIMENSION	HEIGHT	mm/in	1,690 / 66.5	1,650 / 65.0	1,650 / 65.0	1,950 / 76.8
	WIDTH	mm/in	1,965 / 77.4	2,410 / 94.9	2,410 / 94.9	2,410 / 94.9
	DEPTH	mm/in	1,905 / 75	2,030 / 79.9	2,030 / 79.9	2,030 / 79.9
PACKING DIMENSION	HEIGHT	mm/in	1,730 / 68.1	1,740 / 68.5	1,740 / 68.5	2,040 / 80.3
	WIDTH	mm/in	2,120 / 83.5	2,570 / 101.2	2,570 / 101.2	2,570 / 101.2
	DEPTH	mm/in	2,020 / 79.5	2,290 / 90.2	2,290 / 90.2	2,290 / 90.2
UNIT WEIGHT	kg/lb	870 / 1,918	970 / 2138	980 / 2161	1,130 / 2,491	
REFRIGERANT	TYPE	R410A				
	CHARGE	kg/lb	8.5 x 2 / 18.74 x 2	12.0 x 2 / 26.46	10.8 x 2 / 23.81 x 2	14.0 x 2 / 30.86 x 2

\*Remark : All previous testing condition applied and cooling capacity is based on nominal.

### ACSON MALAYSIA SALES & SERVICE SDN.BHD. (129688-D)

a member of **DAIKIN** group

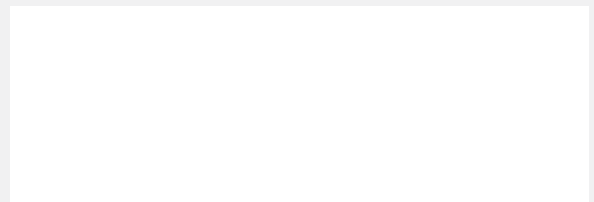
Lot 4, Lorong 19/1A, Seksyen 19, 46300 Petaling Jaya,  
Selangor Darul Ehsan, MALAYSIA.

Tel : +603 7964 8200 Sales Fax : +603 7956 9909

Service Fax : +603 7956 9907 Acson Careline : 1300 22 3344

**Penang** : +604-5377 176      **Pahang** : +609-5178 696  
**Perak** : +605-3129 828      **Kelantan** : +609-7405 233  
**Melaka** : +606-2926 196      **Sarawak** : +6082-344 128  
**Johor** : +607-3551 599      **Sabah** : +6088-420 205

Authorized Dealer :



Products manufactured in an ISO certified facility.  
This document contains the most current product information as of this printing.  
For the most up-to-date product information, please logon to [www.acson.com.my](http://www.acson.com.my)