

LARGE FLOOR STANDING

Cool Sentinel

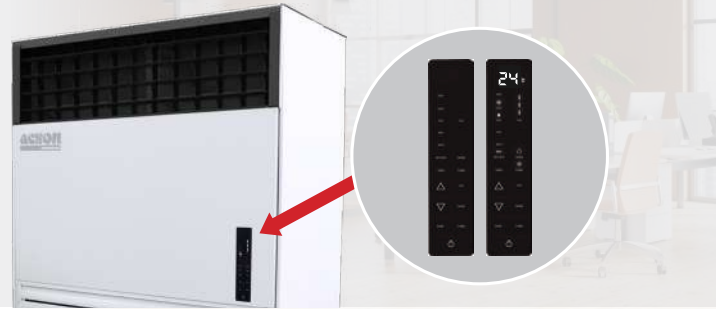
ACSON[®]
International
Air Conditioners



FEATURE | LARGE FLOOR STANDING

ELEGANT AND WHITE SLEEK DESIGN

The stylish white sleek design makes it easier to be placed and blend in with any interior design. It is equipped with modern look control panel with white LED light for display.



Auto
Auto horizontal swing

Manual
Manual setting of vertical airflow louvers

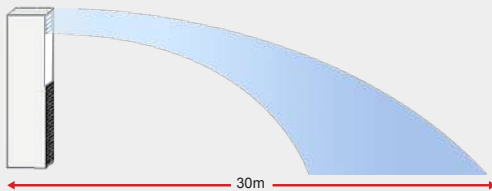


FLEXIBLE AIR DISCHARGE

Air flow direction can be easily adjusted, auto horizontal swing and manual setting of vertical airflow louver to accommodate your cooling need.

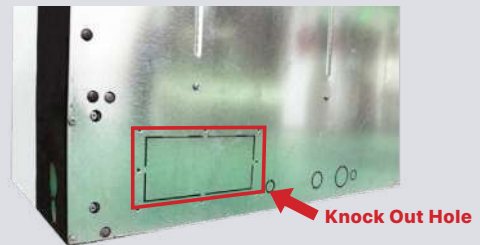
POWERFUL AIR FLOW & TURBO MODE

Acson Large Floor Standing is able to deliver air flow distance up to 30m due to its powerful airflow. With its powerful airflow, the cool air can be distributed evenly to every corner of the room.



FRESH AIR INTAKES

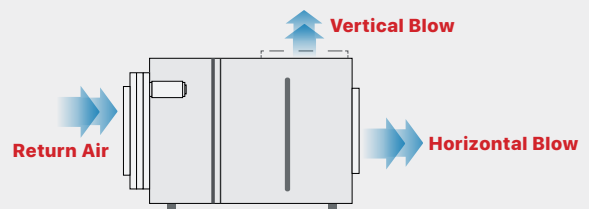
Fresh Air Mixing is available, which up to 20% of fresh air can be introduced to the return air. Knock hole is ready available at the rear unit for the easy ducting connection



A5LFS CONDENSING UNIT

CONVERTIBLE AIR DISCHARGE

The air discharge convertible from vertical to horizontal discharge for versatility installation



HIGH DURABILITY

Outdoor unit casing is adopted with zinc coated heavy gauge galvanized steel, with exterior surfaces finished with a weather resistant polyester powder coating to increase the durability. The Aluminium Titanium (Al-Ti) Parallel Flow Condenser Coil has better durability and corrosion resistance which proven through SWAAT [ASTM G85-A3] and CASS [ASTM B 368] tests.

Remarks: Optional Epoxy Coating is available per request.

PRE-CHARGED REFRIGERANT AND LONGER PIPING

The Parallel Flow Condenser coils are filled with R410A refrigerant from factory which provides ease of installation and charging work on site. More flexibility and versatility to position the outdoor unit as maximum piping length can extend up to 75m and maximum elevation length up to 30m.

TECHNICAL SPECIFICATION

A5LFS A Series (R410A)



Model	Indoor Unit		A5LFS 80A	A5LFS 100A	A5LFS 130A	A5LFS 150A	
	Outdoor Unit		A5MC 80H	A5MC 100H	A5MC 125H	A5MC 150H	
Nominal Capacity	BTU/h		80,000	100,000	121,000	153,000	
	kW		23.5	29.3	35.5	44.8	
Nominal Total Input Power	W		7,816	9,769	12,021	14,947	
Nominal Running Current	A		14.10	18.08	19.94	28.39	
EER	BTU/h/W		10.24	10.24	10.07	10.24	
	W/W		3.00	3.00	2.95	3.00	
Power Source	V/Ph/Hz		ID- 220-240/1/50 OD- 380-415/3/50				
Refrigerant Type			R410A				
Indoor Unit	Control	Operation		Front Discharge			
		Louver	Vertical	Automatic			
		Air Discharge	Horizontal	Manual			
	Air Flow	High	I/s (CFM)	1180 (2,500)	1,227 (2600)	1,604 (3,400)	1,982 (4,200)
		Medium	I/s (CFM)	991(2,100)	1,038 (2,200)	1,369 (2,900)	1,911 (4,050)
		Low	I/s (CFM)	802 (1,700)	850 (1,800)	1,180 (2,500)	1,841 (3,900)
	Sound Pressure Level (H/M/L)	dBA		67/63/58	67/63/58	65/61/58	69/68/66
	Unit Dimension	Height	mm (in)	1,947 (76.65)	1,947 (76.65)	1,947 (76.65)	1,947 (76.65)
		Width	mm (in)	959 (37.75)	959 (37.75)	1,129 (44.45)	1,279 (50.35)
		Depth	mm (in)	500 (19.69)	500 (19.69)	500 (19.69)	550 (21.65)
	Packaged Dimension	Height	mm (in)	2,100 (82.68)	2,100 (82.68)	2,100 (82.68)	2,100 (82.68)
		Width	mm (in)	1,000 (39.37)	1000 (39.37)	1,200 (47.24)	1,360 (53.54)
		Depth	mm (in)	600 (23.62)	600 (23.62)	600 (23.62)	650(25.59)
	Unit Weight	kg (lb)		129 (284)	136 (300)	155 (342)	172 (379)
	Condensate Drain Size	mm (in)		32 (1.26)			
Air Throw	m		30				
Outdoor Unit	Air Flow		I/s (CFM)	2,077 (4,400)	3,020 (6,400)	3,256 (6,900)	4,908 (10,400)
	Sound Pressure Level		dBA	69	65	65	70
	Unit Dimension	Height	mm (in)	929 (35.58)	1,067 (42.00)	1,067 (42.00)	1,166 (45.87)
		Width	mm (in)	1,235 (48.62)	880 (34.65)	980 (38.58)	980 (38.58)
		Depth	mm (in)	496 (19.53)	880 (34.65)	980 (38.58)	980 (38.58)
	Packaged Dimension	Height	mm (in)	1,111 (43.74)	1,231 (48.46)	1,292 (50.87)	1,362 (53.62)
		Width	mm (in)	712 (28.03)	1,030 (40.55)	1,181 (46.50)	1,193 (46.97)
		Depth	mm (in)	1,414 (55.67)	1,058(41.65)	1,195 (47.05)	1,207 (47.52)
	Unit Weight	kg (lb)		118 (260)	143 (315.30)	173 (381)	184(406)
	Pipe Connection	Liquid	mm (in)	12.7 (1/2)	12.7 (1/2)	12.7 (1/2)	15.88 (5/8)
		Gas	mm (in)	22.22 (7/8)	25.4 (1)	28.6 (1 1/8)	34.9 (1 3/8)
Max Allowable Length	m		75	75	75	75	
Max Allowable Elevation	m		30	30	30	30	

* All specifications are subjected to change by the manufacturer without prior notice.

* Nominal cooling capacity is based on the conditions: Cooling 27oC DB / 19oC WB indoor and 35oC DB.

ACSON[®]
International
Air Conditioners

ACSON MALAYSIA SALES & SERVICE SDN.BHD.
*a member of **DAIKIN** group*

Business Registration NO.198401017130 (129688-D)

No. 7A, Jalan 13/4, Seksyen 13, 46200 Petaling Jaya,
Selangor Darul Ehsan, MALAYSIA.
Tel : +603 7964 8200 Sales Fax : +603 7956 9909
Service Fax : +603 7956 9907 Acson Careline : 1300 22 3344

Penang	: +604-5377 176	Pahang	: +609-5178 696
Perak	: +605-3129 828	Kelantan	: +609-7405 233
Melaka	: +606-2926 196	Sarawak	: +6082-344 128
Johor	: +607-3551 599	Sabah	: +6088-420 205

Authorized Dealer :

Products manufactured in an ISO certified facility.
This document contains the most current product information as of this printing.
For the most up-to-date product information, please logon to www.acson.com.my

CAT-A5LFS-2401

www.acson.com.my |     AcsonMalaysia