

CEILING CASSETTE SERIES

Zephyr



ECOcool
Eco Friendly Product Series **R410A**

ACSON
International
Air Conditioners



Model:
A5CK 20F - 50F

Nominal Cooling Capacity:
1.76kW ~ 4.92kW
18,500 BTU/h ~ 46,000 BTU/h

Acson Ceiling Cassette provides optimum comfort in a simple and elegant way. A comfort cooling environment is provided by 4 ways of air discharge. With the powerful distribution and elegant panel design, modern lifestyle is assured with fine serenity and calm.



Deodorize! Sterilize! Purify!

Unit comes with advanced Plusma Technology which effectively deactivates bacteria by damaging their microbial DNA and their surface structures. It emits massive positive and negative ions, and sterilizes surrounding air more effectively, providing fresh and clean environment to ensure optimal comfort of users.

**Applicable for A5CK-C and A5CK-F Series.*



Acson Ceiling Cassette is equipped with R410A refrigerant gas. R410A refrigerant is a near-azeotropic mixture of 50% of R32 and 50% of R125 which contributes zero Ozone Depletion Potential (ODP). It is a greener choice compared to R22 refrigerant to preserve global climate changes.

Common Installation Places

Sometimes, people do feel stuffy and uncomfortable in a room full of people. Hot air tends to circulate in an enclosed room and people are contributing to higher room's temperature.



1. Large Common Place

Provides maximum comfort cooling especially when the room is full of people.



2. Office and Shop

Provides fast cooling and direct airflow for social purpose. Concentration is disrupted when the room is stuffy and warm.



3. Restaurant and Coffee Shop

Various types of odours will bring discomfort to the customers. Plusma technology helps to purify the air to bring better quality of air.

Features of Ceiling Cassette

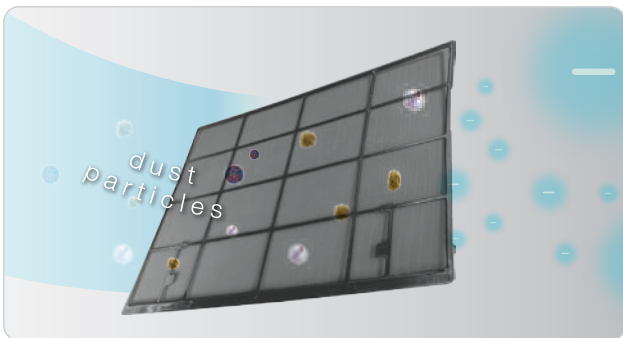
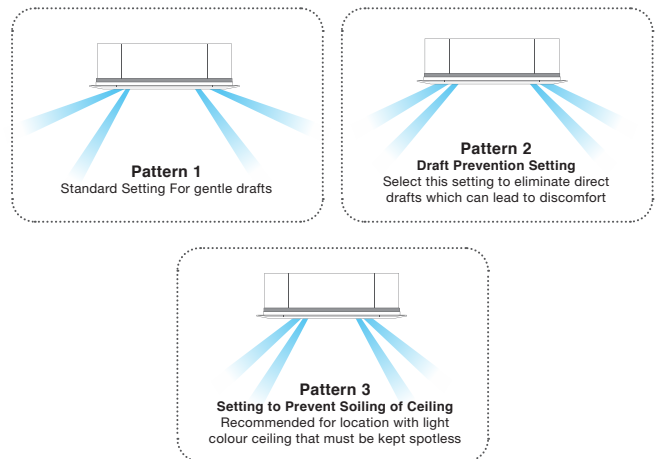


Slim and Elegant Futuristic Design

Maintaining classy and elegant interior design with our stylish and slim panel which blend in seamlessly. Leveraging the uniformity of panel size and unit positioning in any room is enhanced. Installation of various capacity models are made possible.

4-D Cooling Comfort

Four ways air discharge providing excellent cooled air distribution throughout the space. By taking every corner into consideration, it ensures optimal level of comfort. Air flow direction can be fixed at user's designated angle by the remote controller with Auto Mode.



Durable and Accessible Saranet Filter

The anti fungus air filter can trap dust particles in the air which leads to more fresh and healthy environment. Our filter can be cleaned by just simply washing it with water, allowing it to be used repeatedly without regular change.

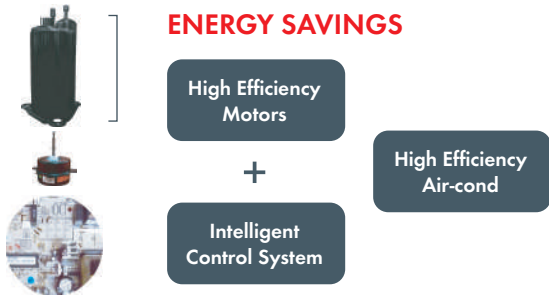
Fresh Air Intake

Optional fresh air intake mechanism according to user's preference. Knock-out hole is available on ceiling cassette indoor unit where a duct can be fitted to increase the intake of outdoor air. A fresher environment is made possible especially for places where ventilation fan is not installed.

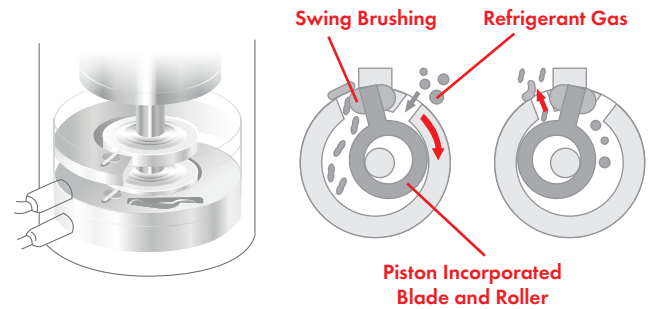


Power of Inverter

Acson Inverter technology controls the compressor's speed accordingly to continuously regulate the room's temperature. The compressor is not constantly running at full power, as the system utilizes a controlled compressor that works at variable speed settings. This consequently lead to much more energy-efficient and environmentally-friendly option than traditional AC.

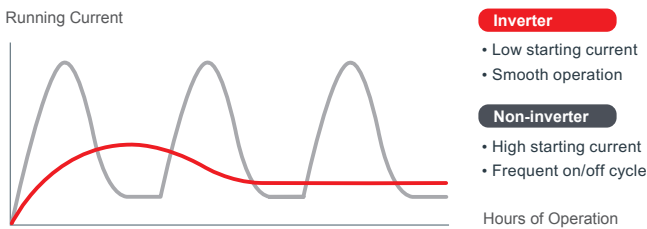
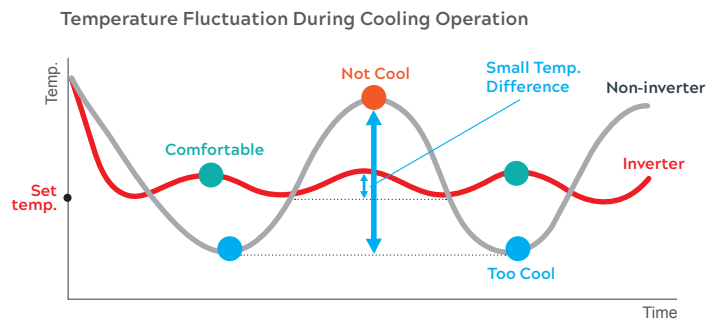


Acson R410A Inverter utilizes hermetic swing compressor. It's precise structure and mechanical movement help to reduce friction and vibration compared to conventional rotary compressor. This reduces refrigerant leakage and ensures maximum capacity is achieved.



Comfort Control

Non-Inverter System uses a fixed-speed compressor, which cycles the unit on and off once the room dips below desired temperature. This can lead to unpleasant temperature swings as the system need to maintain maintain a constant temperature. Inverter's compressor speed is controlled at variable speed which provides a more precise, on-demand approach to temperature control.



Inverter	Gradual Increase of compressor rotation
Non-Inverter	High starting torque to start compressor from stationary compressor

Energy Saving

From an energy perspective, constantly turn on and off compressor can be a costly endeavor.

While inverter system is always on, running at a fraction of full speed is far more efficient in the long run. It's estimated that non- inverter system systems draws higher power on start-up than inverter system.

ULTRA GOLD FIN

The condensor coil is protected with hydrophilic gold fin, which is type of protective layer coating on the fin and it can prolong the lifespan of heat exchanger. Thanks to the hydrophilic gold fin, the condensor coil is more resistant to corrosion, rust, rain & high temperature, without affect the cooling performance.

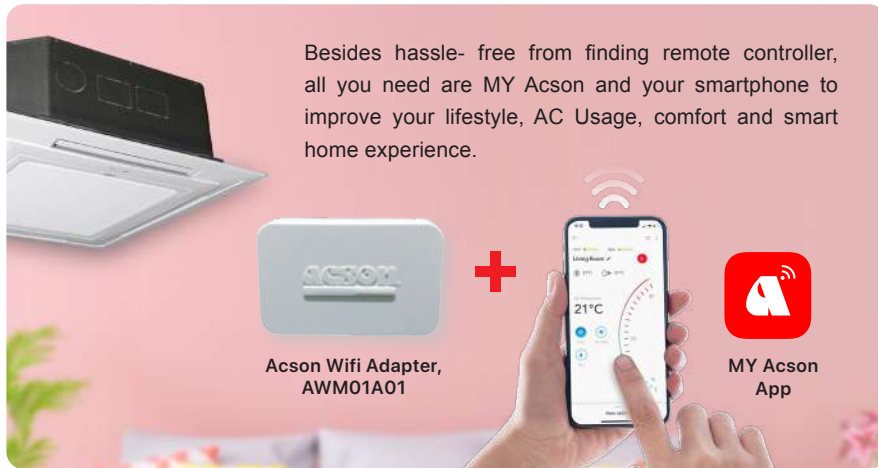
*Applicable to inverter model only



MY Acon, MY Control (Optional Accessory)

MY Acon now offers smart functionality to boost your smart home experience. With MY Acon, you can conveniently control and monitor air conditioner units at anywhere and anytime. Instead of running for the AC remote controller as soon as you reach home, you can enjoy a cool breeze with few taps on your smartphone now.

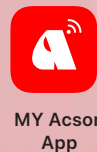
*R410A CK Applicable models : A5CK-C and A5CK-F Series.



Besides hassle-free from finding remote controller, all you need are MY Acon and your smartphone to improve your lifestyle, AC Usage, comfort and smart home experience.



Accon Wifi Adapter,
AWM01A01



MY Acon
App

MY Acon App

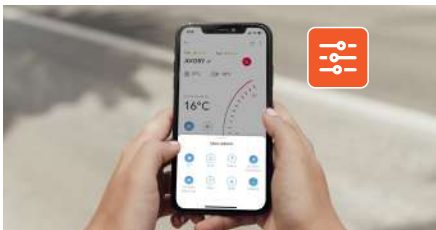
A single swipe on the phone application which designed with simple control user interface. MY Acon is currently available for both Android & IOS system.



MY ACSON



MY Complete Control



- Setting different modes to suit your needs and comfort.
- Controlling fan speed, air flow direction & temperature settings
- Controlling the Zoning System

MY Convenience



- Set 7-day schedules & timers that adjust AC according to your lifestyle
- Control every AC unit from your couch - no need to go racing room-to-room changing settings
- Guest sharing option - possible to be both hospitable and safe

MY Comfort



- Pre-cool your room whilst still in the workplace or office.
- Room is already pre-cooled according to your desired settings as you reach home.

Specification

Dimension	Height (mm)	32
	Width (mm)	50
	Depth (mm)	15
Wi-Fi Frequency		2.4GHz
Network Configuration		
Out-of-home Control		Internet
In-home Control		LAN, Bluetooth
Electrical Specification		
Communication Protocol		NS
Input Supply	Voltage	5V
	Current	150 mA
	Power Consumption	750 mW
Supported OS		Android 5 or later; IOS 9 or later



Specifications

A5CK Series (R410A)



Model		Indoor		A5CK 10C	A5CK 15C	A5CK 20F	A5CK25F	A5CK30F	A5CK30F	A5CK35F	A5CK40F	A5CK50F
		Outdoor		A5LC 10F	A5LC15F	A5LC 20C	A5LC25C	A5LC28C	A5LC30C	A5LC35D	A5LC40D	A5LC50D
Nominal Cooling Capacity		BTU/h		9,500	12,500	18,500	23,000	28,000	30,000	36,000	42,000	46,000
		kW		2.78	3.66	5.42	6.74	8.21	8.79	10.55	12.31	13.50
Nominal Total Input Power		W		950	1,250	1,795	2,090	2,810	2,930	3,770	4,110	4,800
Nominal Running Current		A		4.26	5.60	7.92	9.24	13.0	13.6	16.7	6.57	8.39
EER		BTU/h/W		2.93		3.02	3.22	2.92	3.00	2.80	3.00	2.81
		W/W		10		10.31	11.00	9.96	10.24	9.55	10.22	9.58
Power Source		V/Ph/Hz		220-240 / 1/ 50							380 - 415/3/50	
Refrigerant Type		R410A										
Control		Operation		WIRED OF WIRELESS								
		Air Discharge		4 WAY AUTOMATIC LOUVER (UP AND DOWN)								
Air Flow		High	l/s (CFM)	194 (410)		396 (840)	420 (890)	420 (890)	420 (890)	486 (1030)	529 (1120)	529 (1120)
		Medium	l/s (CFM)	170 (360)		330 (700)	359 (760)	359 (760)	359 (760)	411 (870)	486 (1030)	486 (1030)
		Low	l/s (CFM)	156 (330)	146 (310)	264 (560)	293 (620)	293 (620)	293 (620)	345 (730)	420 (890)	420 (890)
		Super Low	l/s (CFM)	-	-	207 (440)	231 (490)	231 (490)	231 (490)	274 (580)	359 (760)	359 (760)
Sound Pressure Level		dBA		41/38/35	41/38/34	39/37/34/31	41/38/35/32			46/41/37/34	48/45/41/37	
Unit Dimension		Height	mm (in)	250 (9.84)		246 (9.69)	246 (9.69)	246 (9.69)	246 (9.69)	288 (11.34)	288 (11.34)	288 (11.34)
		Width	mm (in)	570 (22.44)		840 (33.07)	840 (33.07)	840 (33.07)	840 (33.07)	840 (33.07)	840 (33.07)	840 (33.07)
		Depth	mm (in)	570 (22.44)		840 (33.07)	840 (33.07)	840 (33.07)	840 (33.07)	840 (33.07)	840 (33.07)	840 (33.07)
Unit Dimension (Panel)		Height	mm (in)	295 (11.61)		301 (11.85)	301 (11.85)	301 (11.85)	301 (11.85)	343 (13.50)	343 (13.50)	343 (13.50)
		Width	mm (in)	640 (25.20)		950 (37.40)	950 (37.40)	950 (37.40)	950 (37.40)	950 (37.40)	950 (37.40)	950 (37.40)
		Depth	mm (in)	640 (25.20)		950 (37.40)	950 (37.40)	950 (37.40)	950 (37.40)	950 (37.40)	950 (37.40)	950 (37.40)
Packing Dimension		Height	mm (in)	316 (12.48)		324 (12.76)		324 (12.76)		370 (14.57)		
		Width	mm (in)	630 (24.80)		916 (36.06)			916 (36.06)		916 (36.06)	
		Depth	mm (in)	630 (24.80)		916 (36.06)		916 (36.06)		916 (36.06)		
Unit Weight		kg (lb)		15.5 (34.17)		22 (49)		22 (49)	22 (49)	25 (55)	25 (55)	25 (55)
Unit Weight (Panel)		kg (lb)		2 (4.41)		5 (11)		5 (11)	5 (11)	5 (11)	5 (11)	5 (11)
Air Flow		l/s / CFM		438 (927)	390 (827)	598 (1430)	755 (1600)	808 (1712)	808 (1712)	1416 (3000)	1487 (3150)	
		dBA		46	48	49	52	54	56	58	60	
Unit Dimension		Height	mm (in)	550 (21.65)		651 (25.63)	651 (25.63)	753 (29.65)		852 (33.54)	852 (33.54)	852 (33.54)
		Width	mm (in)	658 (25.91)		855 (33.66)	855 (33.66)	855 (33.66)		1030 (40.55)	1030 (40.55)	1030 (40.55)
		Depth	mm (in)	273 (10.75)		328 (12.91)	328 (12.91)	328 (12.91)		400 (15.75)	400 (15.75)	400 (15.75)
Packing Dimension		Height	mm (in)	580 (22.83)		693 (27.28)	693 (27.28)	793 (31.22)		1010 (39.76)	1010 (39.76)	1010 (39.76)
		Width	mm (in)	775 (30.51)		990 (38.98)	990 (38.98)	990 (38.98)		1180 (46.46)	1180 (46.46)	1180 (46.46)
		Depth	mm (in)	355 (13.98)		415 (16.34)	415 (16.34)	415 (16.34)		514 (20.24)	514 (20.24)	514 (20.24)
Unit Weight		kg (lb)		28 (61.73)	29 (63.93)	43 (94.80)	47 (103.62)	57 (125.66)	57 (125.66)	71 (156.53)	84 (185.19)	
Pipe Connection		Type		FLARE VALVE								
		Size	Liquid	mm (in)	6.35 (1/4)			9.52 (3/8)	9.52 (3/8)	9.52 (3/8)	9.52 (3/8)	9.52 (3/8)
Gas	mm (in)		9.52 (3/8)	12.70 (1/2)		15.88 (0.63)	15.88 (5/8)	15.88 (5/8)	15.88 (5/8)	15.88 (5/8)	15.88 (5/8)	
Refrigerant Charge		kg(lb)		0.67 (1.48)	0.95 (2.09)	1.00 (2.20)	1.70 (3.86)	2.05 (4.52)	2.10 (4.63)	1.9 (4.19)	2.7 (5.95)	3.05 (6.72)

1. All specifications are subjected to change by the manufacturer without prior notice
2. Nominal Cooling Capacity is based on the conditions : Cooling 27°C DB/ 19°C WB indoor and 35°C DB/ 24°C WB outdoor.
3. Sound Pressure Level is according to JIS B 8615 standard. Position of the measurement point is 1m in front and 1m below the unit.
4. Units are tested & complied to international standards such as ISO 5151 and AHRI 210/240.

Specifications

R410A Ceiling Cassette C and E Series Inverter



Model		Indoor		A5CKY 10C	A5CKY 15C	A5CKY 20E	A5CKY 25E	A5CKY 28E	A5CKY 40E	A5CKY 50E	
		Outdoor		A5LCY 10D	A5LC 15D	A5LCY 20C	A5LCY 25C	A5LCY 28CR	A5LCY 40FR	A5LCY 50FR	
Nominal Cooling Capacity		BTU/h		9,500	12,500	19,400	22,000	24,200	35,800	42,600	
		kW		2.78	3.66	5.69	6.45	7.10	10.5	12.5	
Nominal Total Input Power		W		770	940	1,590	1,910	2,212	3,070	3,880	
Nominal Running Current		A		4.08	4.45	7.16	8.48	9.77	4.85	6.04	
EER		BTU/h/W		12.32	12.62	12.20	11.52	10.95	11.66	10.98	
		W/W		3.61	3.7	3.58	3.38	3.21	3.42	3.22	
Power Source		V/Ph/Hz		220-240 / 1 / 50					380-415 / 3 / 50		
Refrigerant Type		R410A									
Control		Operation		WIRELESS OR WIRED							
		Air Discharge		4 WAY AUTOMATIC LOUVER (UP AND DOWN)							
Air Flow		High	l/s (CFM)	189 (400)	193 (410)	283 (600)	321 (680)	410 (860)	490 (1,030)	780 (1,200)	
		Medium	l/s (CFM)	184 (390)		250 (530)	283 (600)	342 (725)	406 (860)	486 (1,030)	
		Low	l/s (CFM)	175 (370)	170 (360)	203 (430)	250 (530)	293 (620)	349 (740)	439 (930)	
Sound Pressure Level		dBA		44 / 41 / 38	45 / 42 / 38	34 / 31 / 28 / 27	37 / 34 / 31 / 30	41 / 38 / 35 / 32	44 / 41 / 38 / 35	47 / 44 / 43 / 39	
Unit Dimension		Height	mm (in)	250 (9.84)		265 (10.43)			300 (11.81)		
		Width	mm (in)	570 (22.44)			820 (32.2)				
		Depth	mm (in)	570 (22.44)			820 (32.2)				
Packing Dimension		Height	mm (in)	316 (12.44)		330 (12.99)		306 (12.05)	335 (13.19)		
		Width	mm (in)	630 (24.80)			916 (36.1)				
		Depth	mm (in)	630 (24.80)			916 (36.1)				
Unit Weight		kg (lb)		18 (39.68)		30 (66.14)		31 (68.34)	39 (85.98)	41 (90.39)	
Unit Weight (Panel)		kg (lb)		2 (4.41)		4 (8.82)					
Air Flow		l/s / CFM		473 (1,000)		869 (1,482)		843 (1,786)	1,553 (3,290)	1,534 (3,250)	
Sound Pressure Level		dBA		49		51		50		51	
Unit Dimension		Height	mm (in)	550 (21.65)		753 (29.65)			1,374 (54.09)		
		Width	mm (in)	765 (30.12)		855 (33.66)		940 (37.01)	900 (35.43)		
		Depth	mm (in)	285 (11.22)		328 (12.91)		392 (15.43)	320 (12.60)		
Packing Dimension		Height	mm (in)	610 (24.02)		793 (31.22)			1,529 (60.20)		
		Width	mm (in)	895 (35.24)		990 (38.98)			1030 (40.55)		
		Depth	mm (in)	360 (14.17)		415 (16.34)		421 (16.57)			
Unit Weight		kg (lb)		31 (68.34)	33 (72.75)	51 (112.44)		100 (220.46)			
Pipe Connection		Type		Flare Valve							
		Size	Liquid	mm (in)	6.35 (1/4)			9.52 (3/8)			
			Gas	mm (in)	9.52 (3/8)	12.70 (1/2)	15.88 (5/8)				
Refrigerant Charge		kg(lb)		0.75 (1.65)	1.1 (2.42)	1.45 (3.20)	1.50 (3.31)	1.80 (3.97)	3.95 (8.71)		

1. All specifications are subjected to change by the manufacturer without prior notice
2. Nominal Cooling Capacity is based on the conditions : Cooling 27°C DB/ 19°C WB indoor and 35°C DB/ 24°C WB outdoor.
3. Sound Pressure Level are according to JIS C 9612 standard. Position of the measurement point is 1m in front and 0.8m below the unit.
4. Units are tested & complied to international standards such as ISO 5151 and AHRI 210/240.

Remarks: A5CKY40E and A5CKY50E are available in power supply of 220-240v/1Phase/50Hz.



ACSON MALAYSIA SALES & SERVICE SDN.BHD.
a member of DAIKIN group

Business Registration NO.198401017130 (129688-D)

Lot 4, Lorong 19/1A, Seksyen 19, 46300 Petaling Jaya,
Selangor Darul Ehsan, MALAYSIA.

Tel : +603 7964 8200 Sales Fax : +603 7956 9909

Service Fax : +603 7956 9907 Acson Careline : 1300 22 3344

Penang	: +604-5377 176	Pahang	: +609-5178 696
Perak	: +605-3129 828	Kelantan	: +609-7405 233
Melaka	: +606-2926 196	Sarawak	: +6082-344 128
Johor	: +607-3551 599	Sabah	: +6088-420 205

www.acson.com.my

Authorized Dealer :

Products manufactured in an ISO certified facility.
This document contains the most current product information as of this printing.
For the most up-to-date product information, please logon to www.acson.com.my

CAT-A5CK,A5CKY-2101